

DARTBROOK COMMUNITY CONSULTATIVE COMMITTEE

28 April 2016



CONFIDENTIAL

AGENDA

1 Opening and Apologies

2 Declaration of Pecuniary Interest

3 Correspondence

4 Confirmation of previous Minutes

5 Business Arising

6 Complaints Summary

7 General Business

- Environmental Monitoring
- Exploration Programme
- Current & Ongoing issues
- Action from previous minutes

8 Other Business

- 2015 Annual Review (AEMR)
- Other

9 Next Meeting

10 Meeting Close

GENERAL BUSINESS - MONITORING

- **Rehabilitation & Biodiversity – completed**

- **High Volume Air Sampling**

- **Dust Deposition**

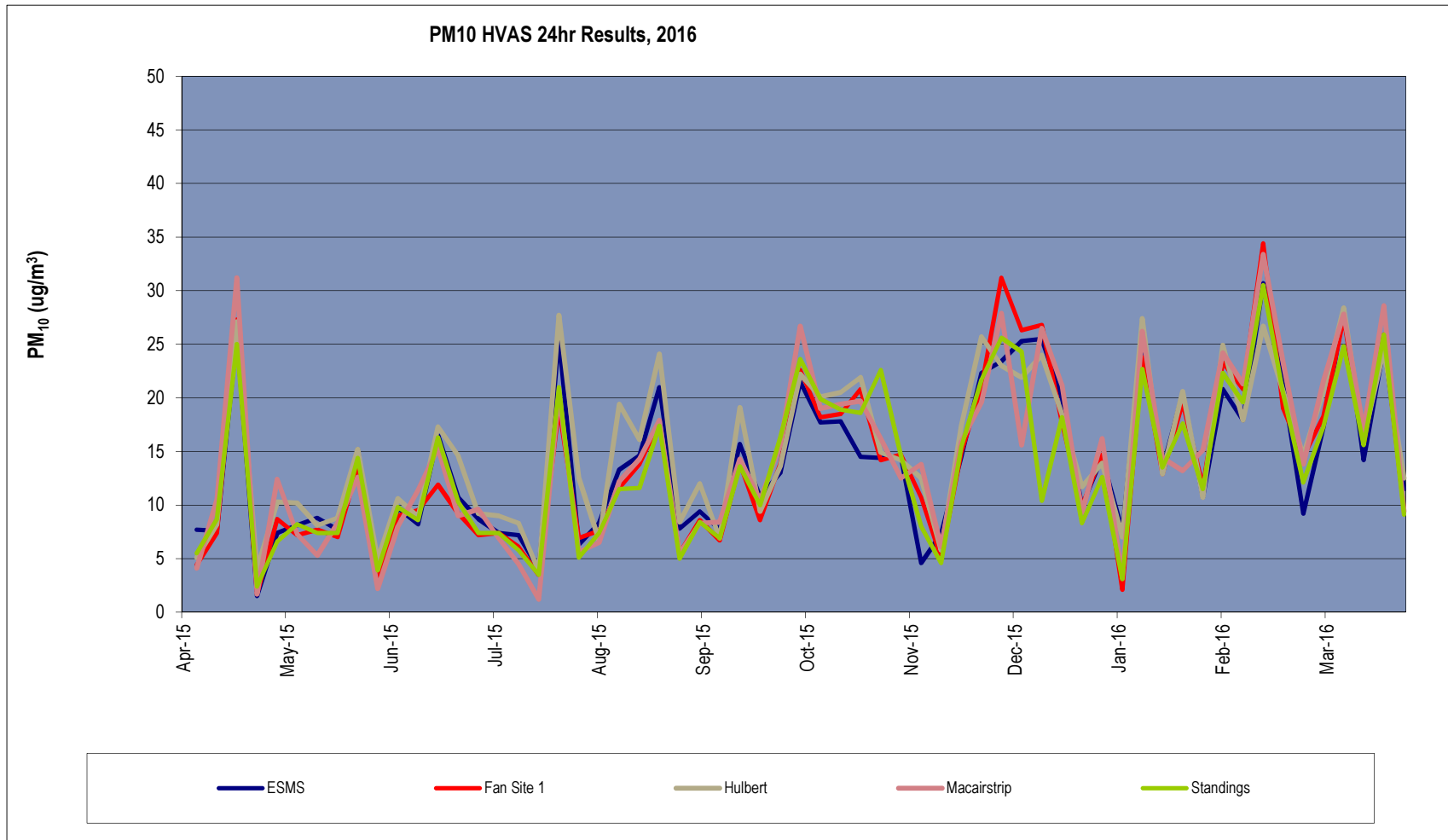
- **Dust Isopleth**

- **Surface Water – Hunter River Salinity**

- **Surface Water – Dart Brook Salinity**

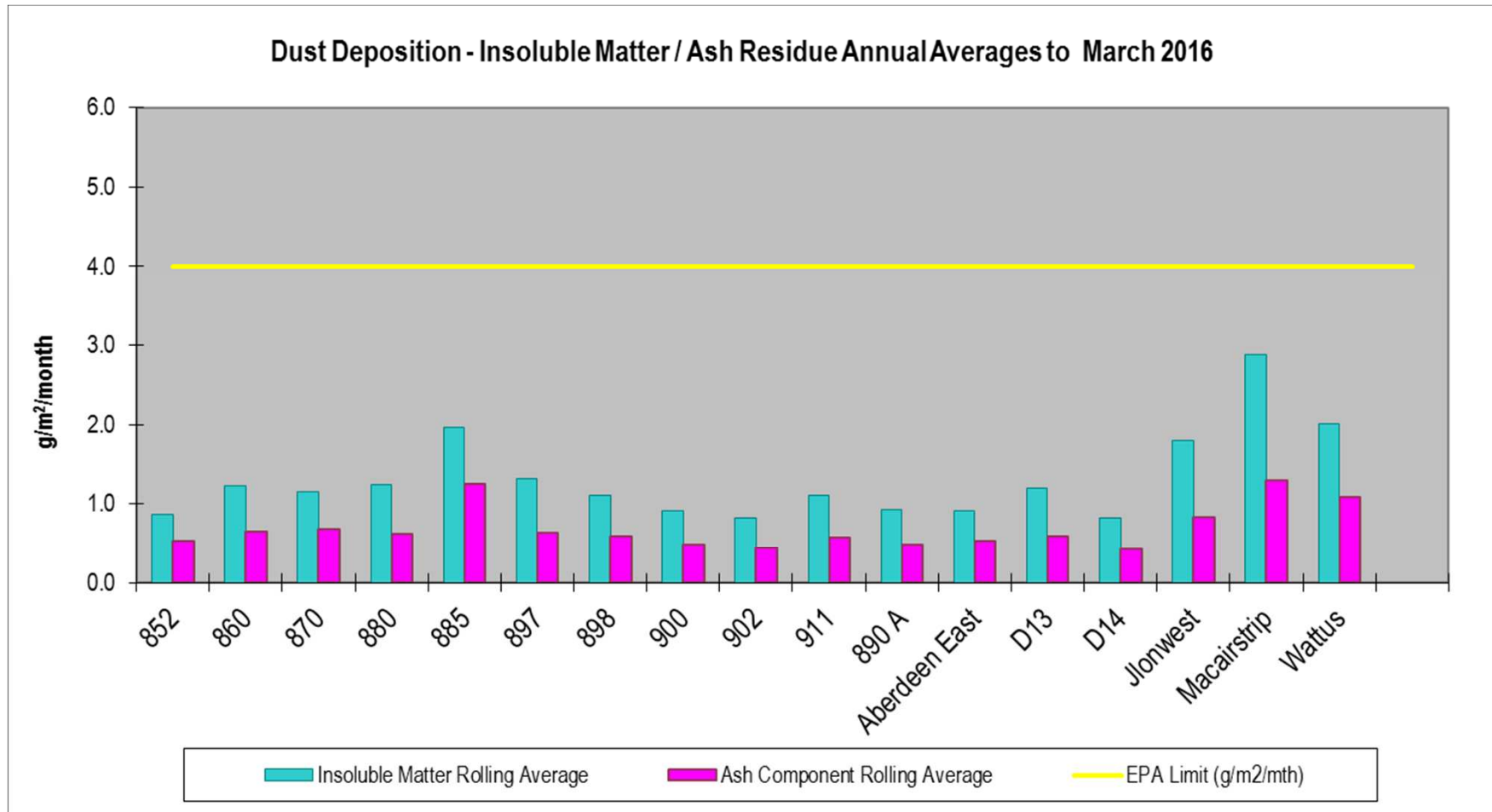
- **Rainfall**

2015 HIGH VOLUME AIR SAMPLER DUST MONITORING



PM10 (Particulate Matter <10µm) NEPC guideline limit is 50ug/m³

DEPOSITIONAL DUST MONITORING.



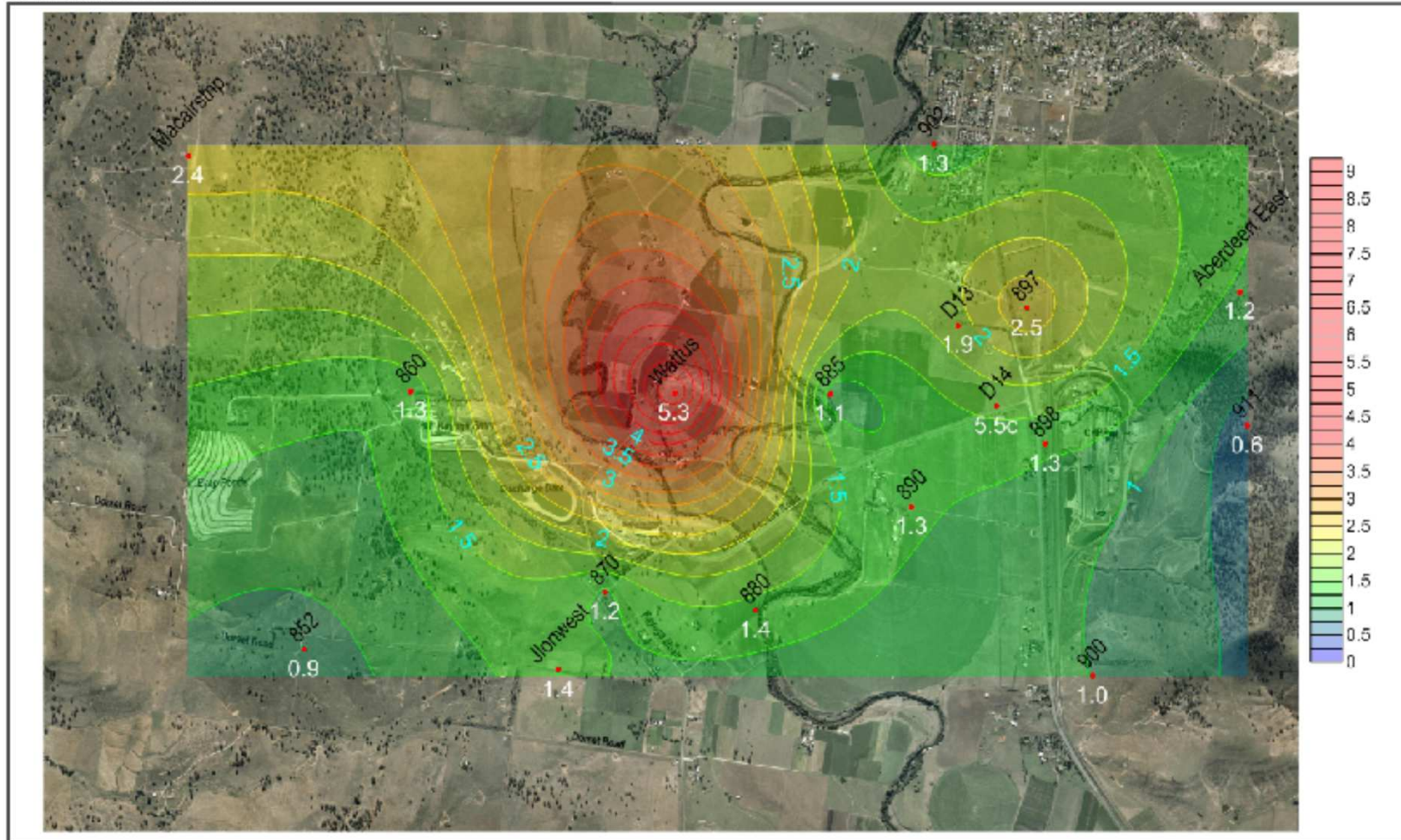
Insoluble Matter is Ash + Combustible Matter

Ash is more representative of dust component, remainder is typically organic matter (e.g. insects)

Annual average below limit of 4g/m²/month at all sites

DUST ISOPLETH FOR MARCH 2016

E363417 07/04/16 LI www.aecom.com



AECOM



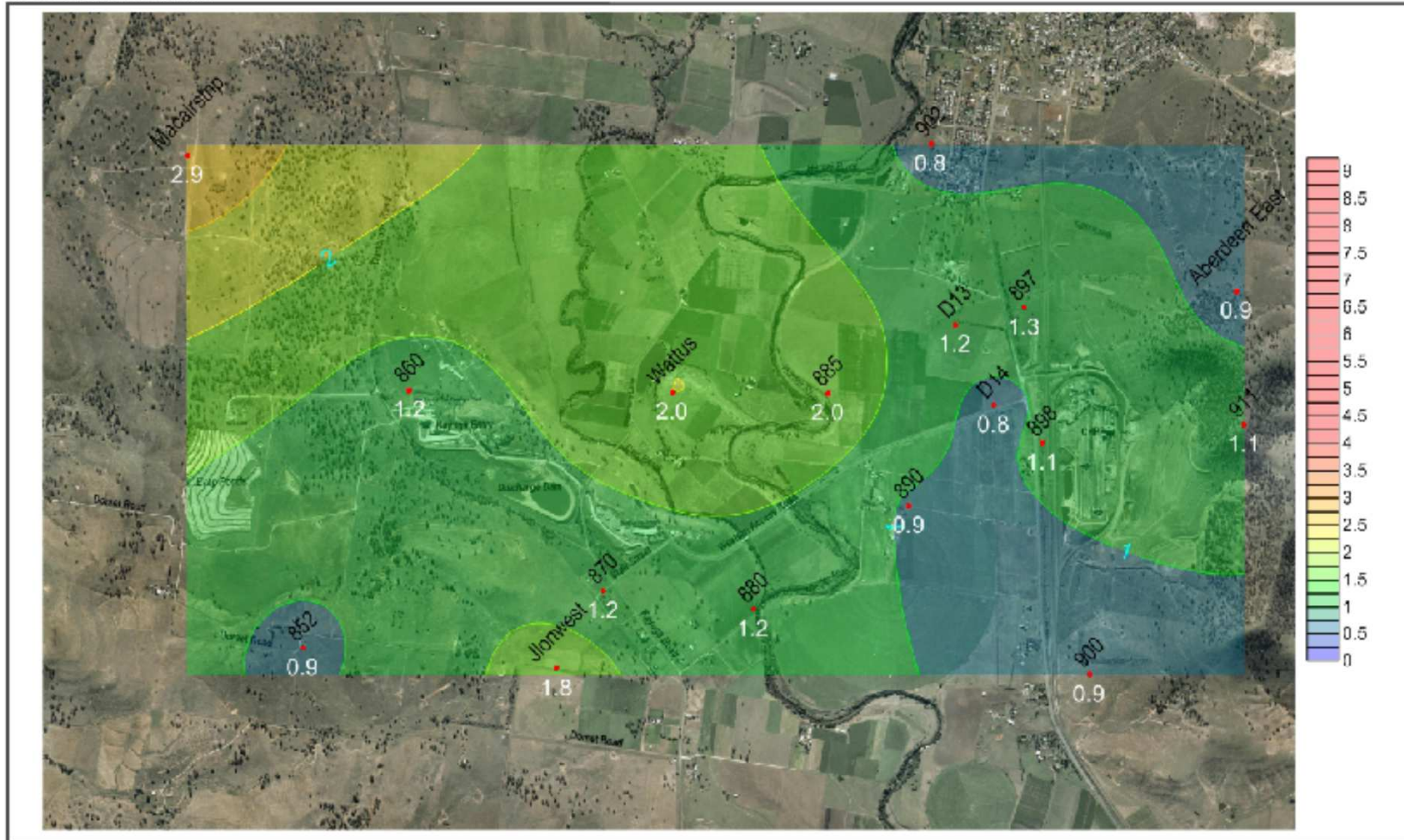
• Dust Gauge Locations
 — Dust Deposition Contours
 Units: g/m³/m²/d

Figure 1 Depositional Dust Contours - March 2016

Anglo Coal - Dartbrook
 Monthly Environmental Monitoring Report
 Aberdeen (G2)

DUST ISOPLETH FOR ANNUAL AVERAGE MARCH 2016

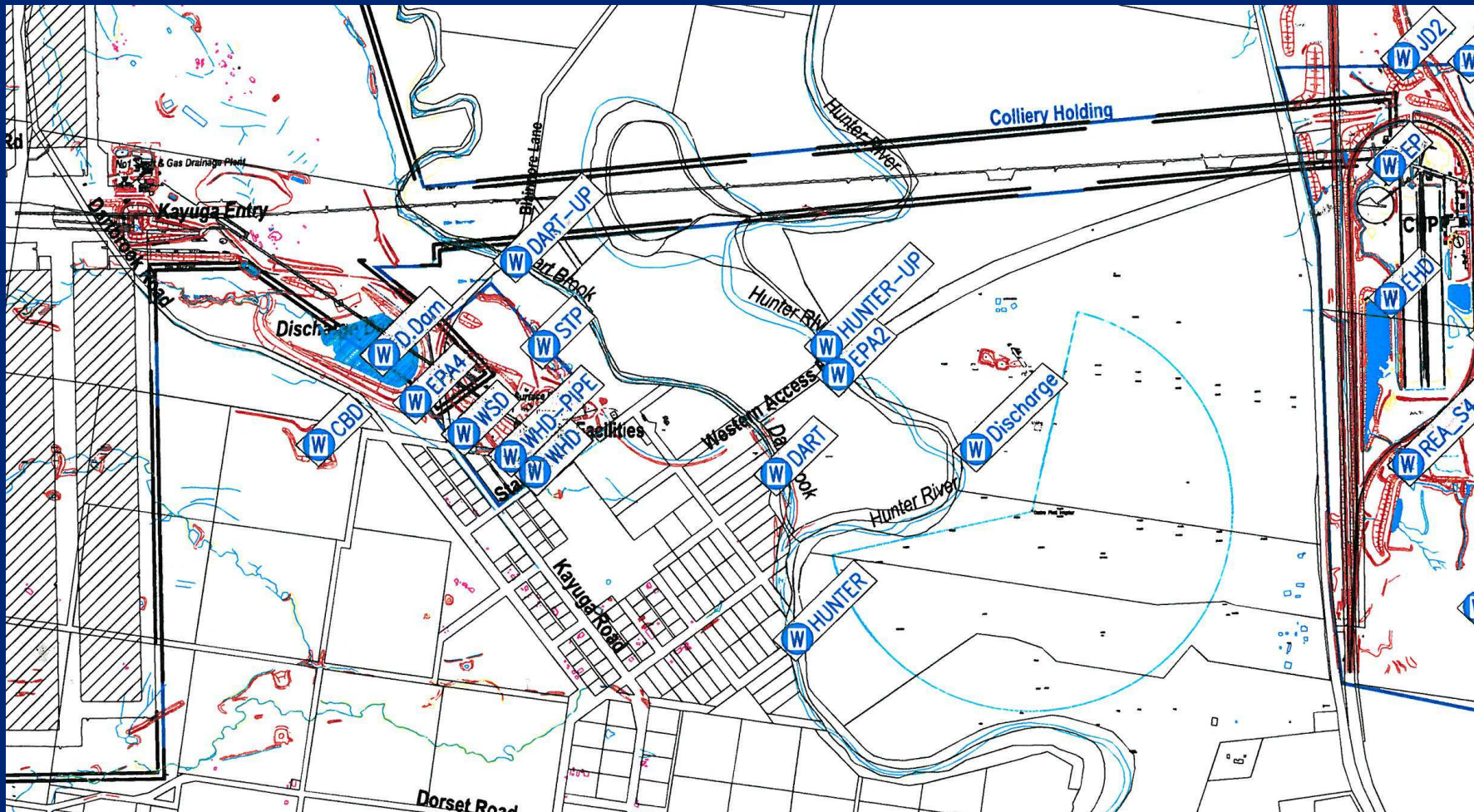
E363417.07/0416 LI|www.aecom.com



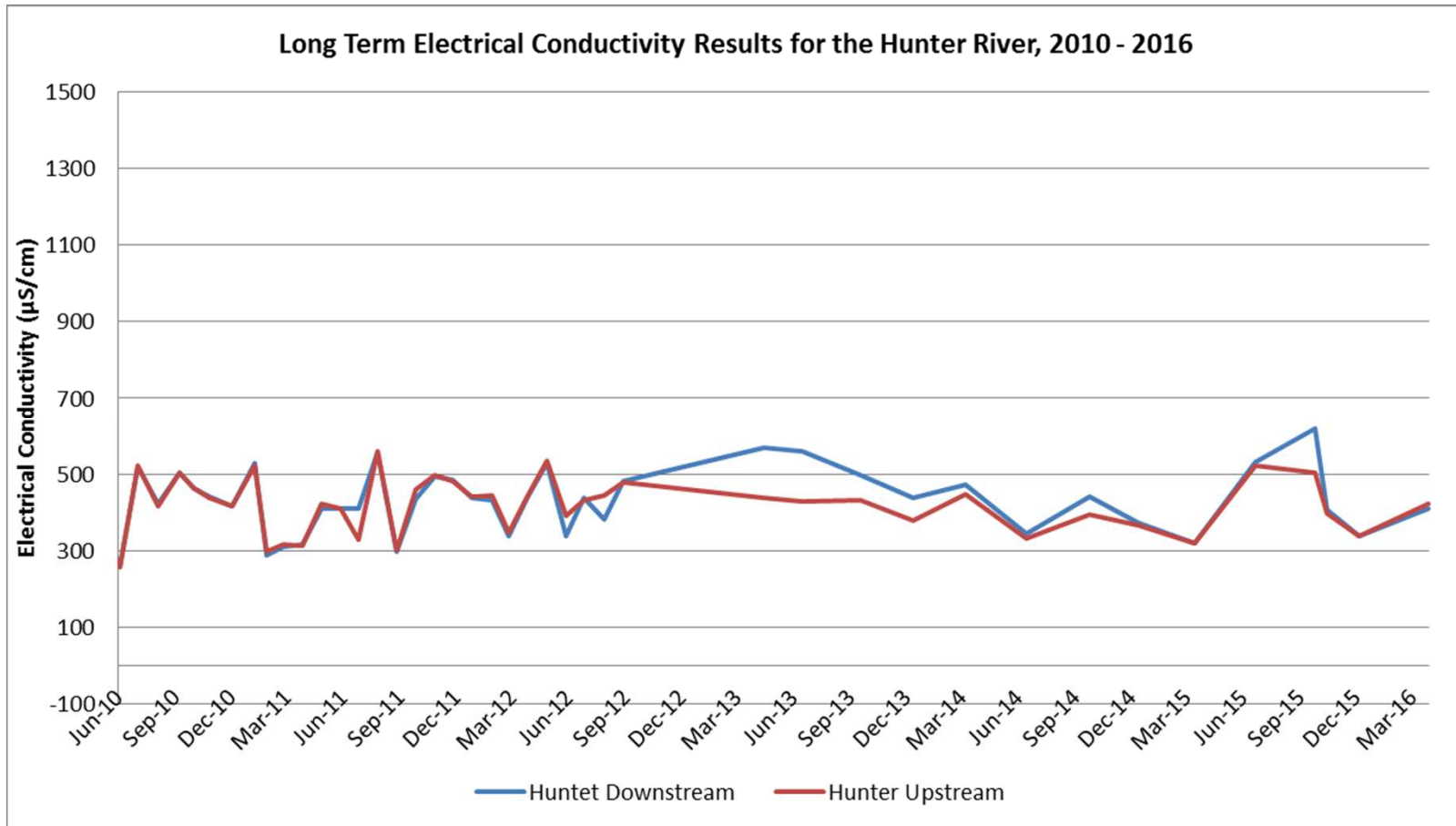
• Dust Gauge Locations
 - Dust Departure Contours
 Units: g/m³/mm

Figure 2 Depositional Dust Contours - Rolling Annual Average, March 2016
 Anglo Coal - Dartbrook
 Monthly Environmental Monitoring Report
 American BCL

Surface water monitoring locations extract

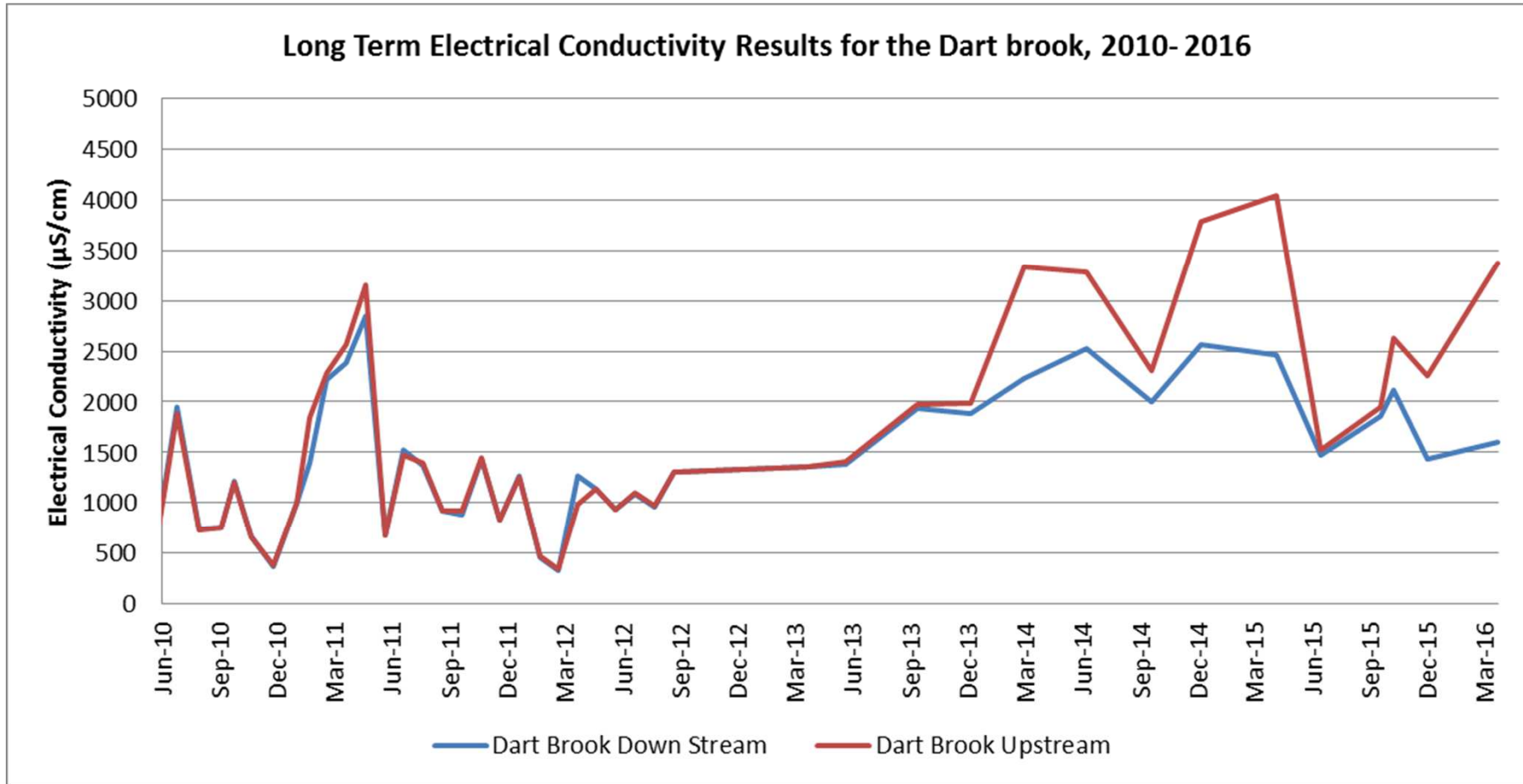


SURFACE WATER SALINITY – HUNTER RIVER



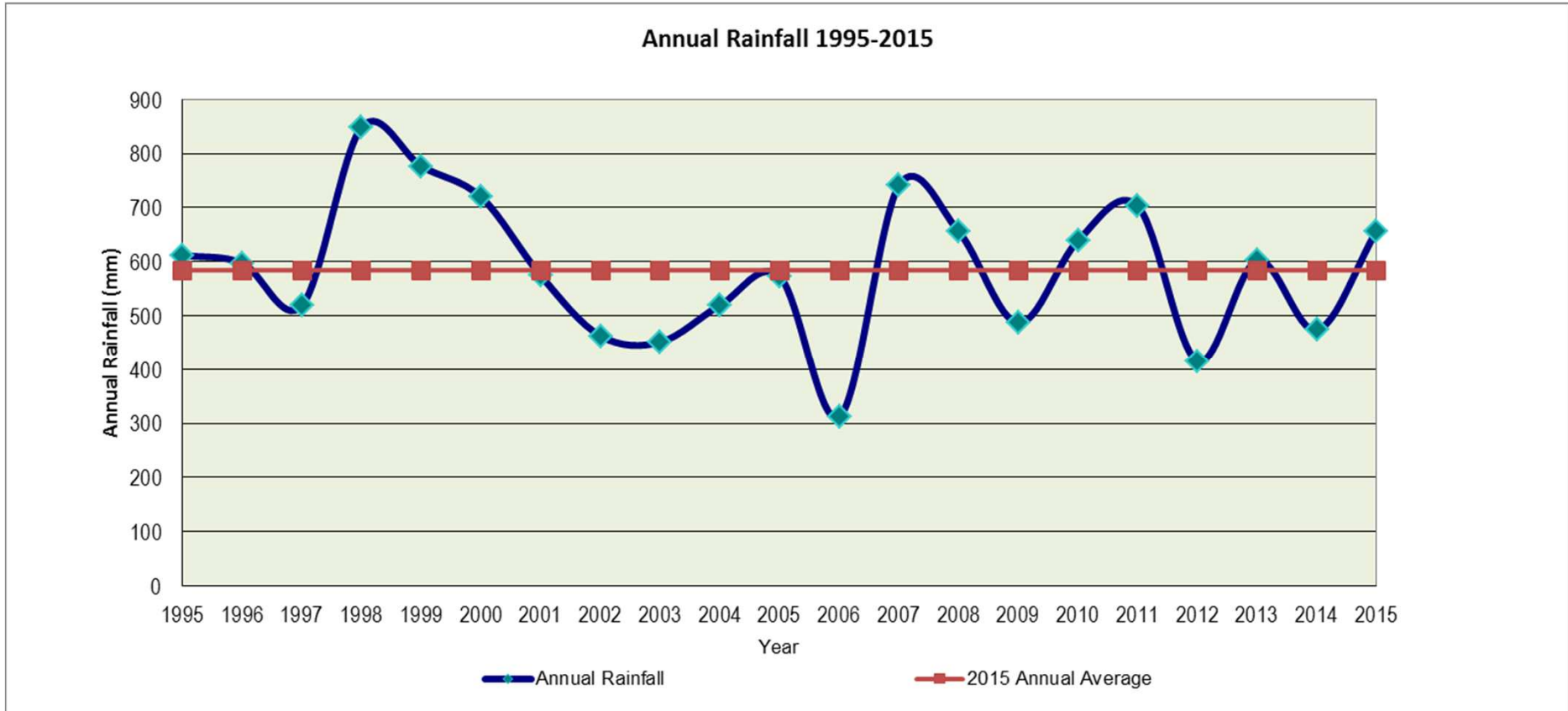
- Electrical Conductivity – reducing marginal difference between Hunter River sites upstream and downstream of the Mine.

SURFACE WATER SALINITY – DART BROOK



- Electrical Conductivity – Upstream EC fluctuates with flow rates (influenced by rainfall) and downstream EC may be influenced by Hunter River flows.

METEOROLOGICAL DATA – life of mine annual average rainfall

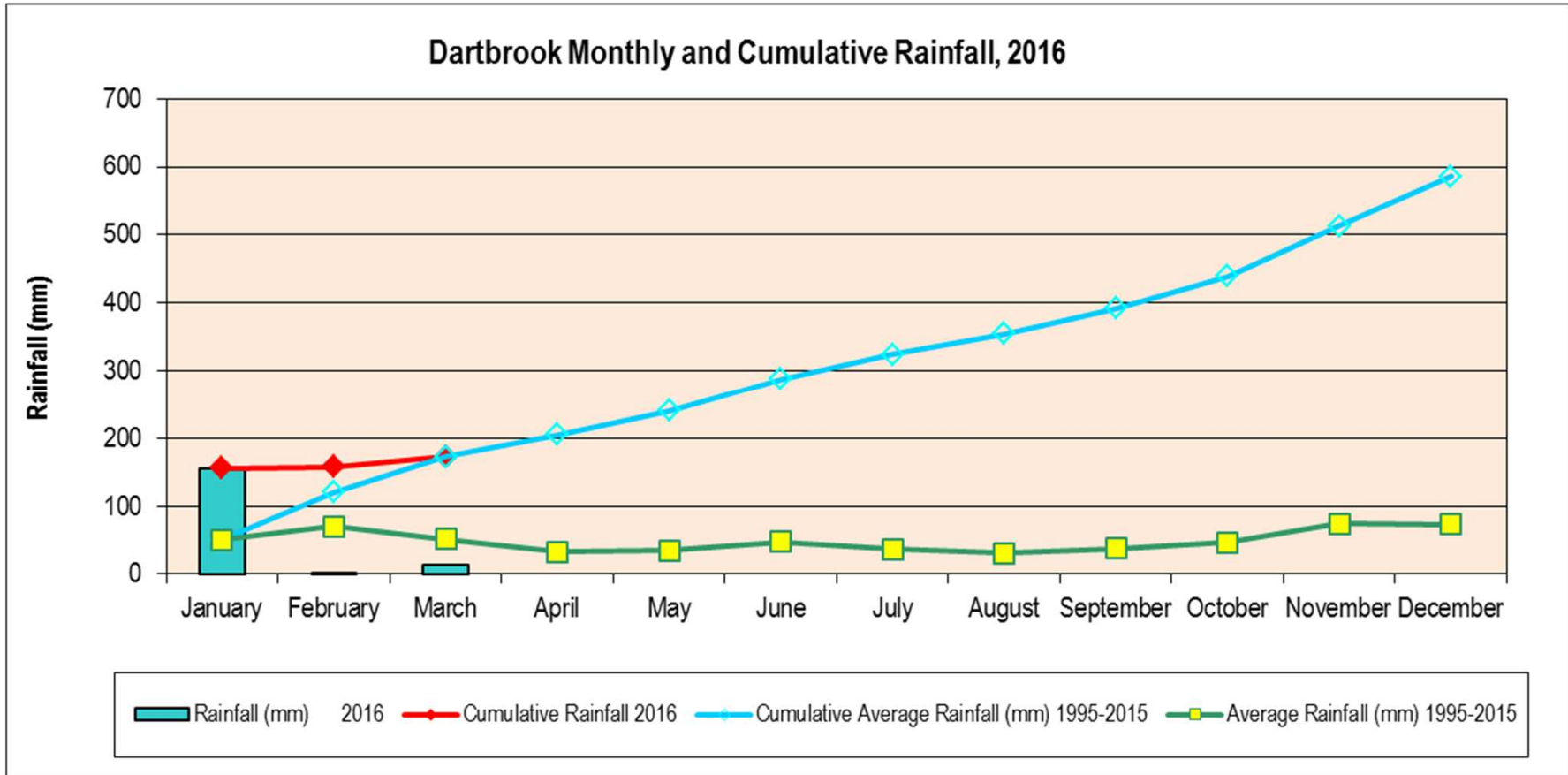


1995 – 2015 average = 584mm

2014 = 473mm which was 112mm below annual average

2015 = 657mm which was 73mm above annual average

METEOROLOGICAL DATA



April to date = 4.6mm. Average for April = 37.5mm

GENERAL BUSINESS - DARTBROOK ACTIVITIES

- **Sale progressing**
- **Exploration – Nil since last meeting.**

- **Projects - Prefeasibility still suspended indefinitely.**

- **Care and Maintenance**
 - **Rural Lands – Ongoing**
 - **Regulatory – Ongoing**
 - **Community - Ongoing**

DARTBROOK CARE & MAINTENANCE – Rural Lands

- **Hwy tree maintenance**
- **Pig & Roo control program continues. 2015 YTD 60 Roos. (NPWS licensed 200)**



DARTBROOK CARE & MAINTENANCE – Rural

- **Weed control – African box thorn, Green Cestrum & Tiger pear**
- **Property maintenance including cemetery**



Use CGM &/or HV Weed Control

DARTBROOK CARE & MAINTENANCE – Dartbrook Oral History

Latest edition launched by Rob Tickle at the Drayton South Plashett Open Days on 16 & 17 April.

KAYUGA – DARTBROOK ORAL HISTORY



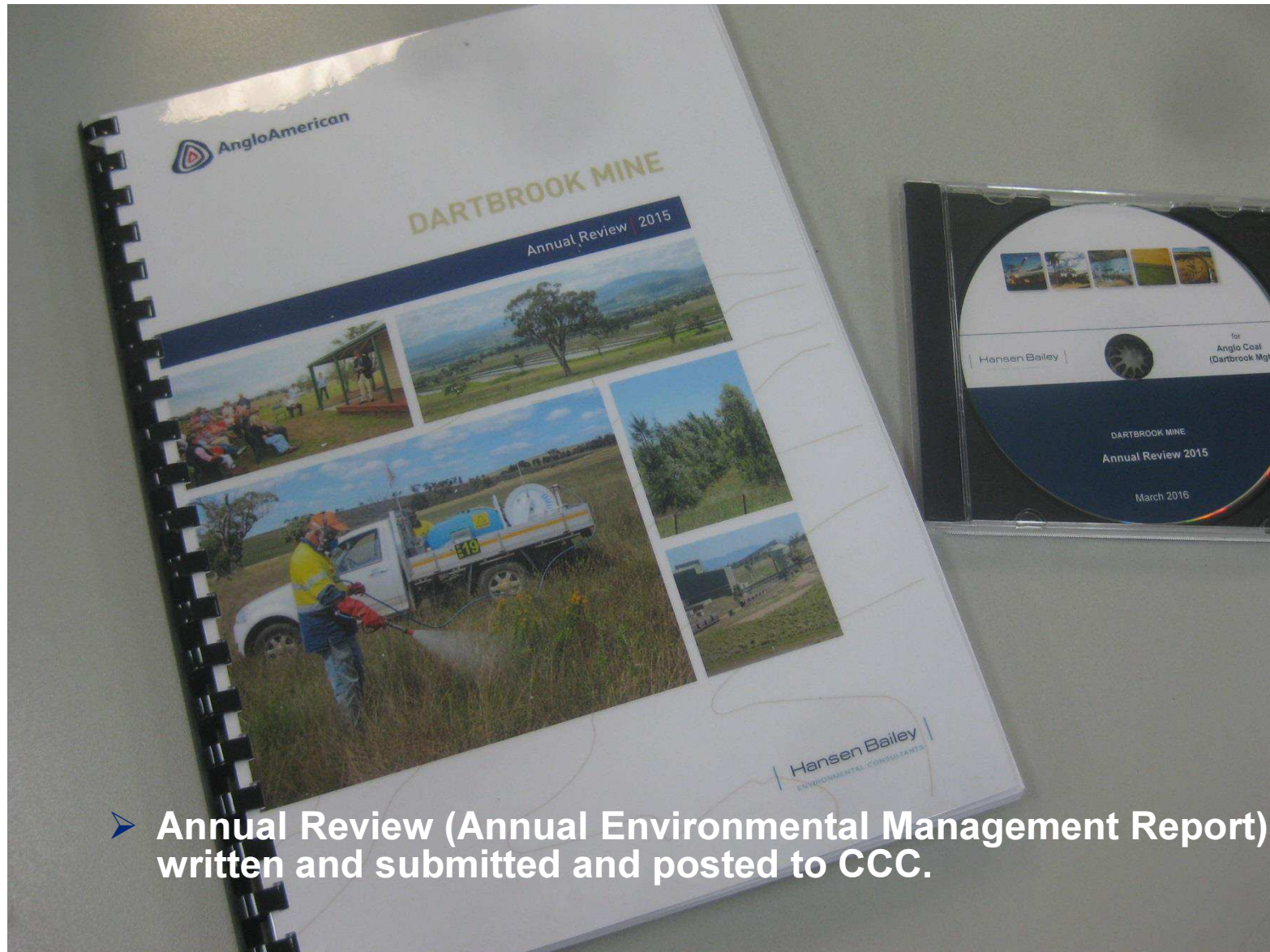
The old entrance to Kayuga Station*

INTERVIEWERS
2003
ROB TICKLE & LAURA KNOWLES

EDITOR
2016
ROB TICKLE

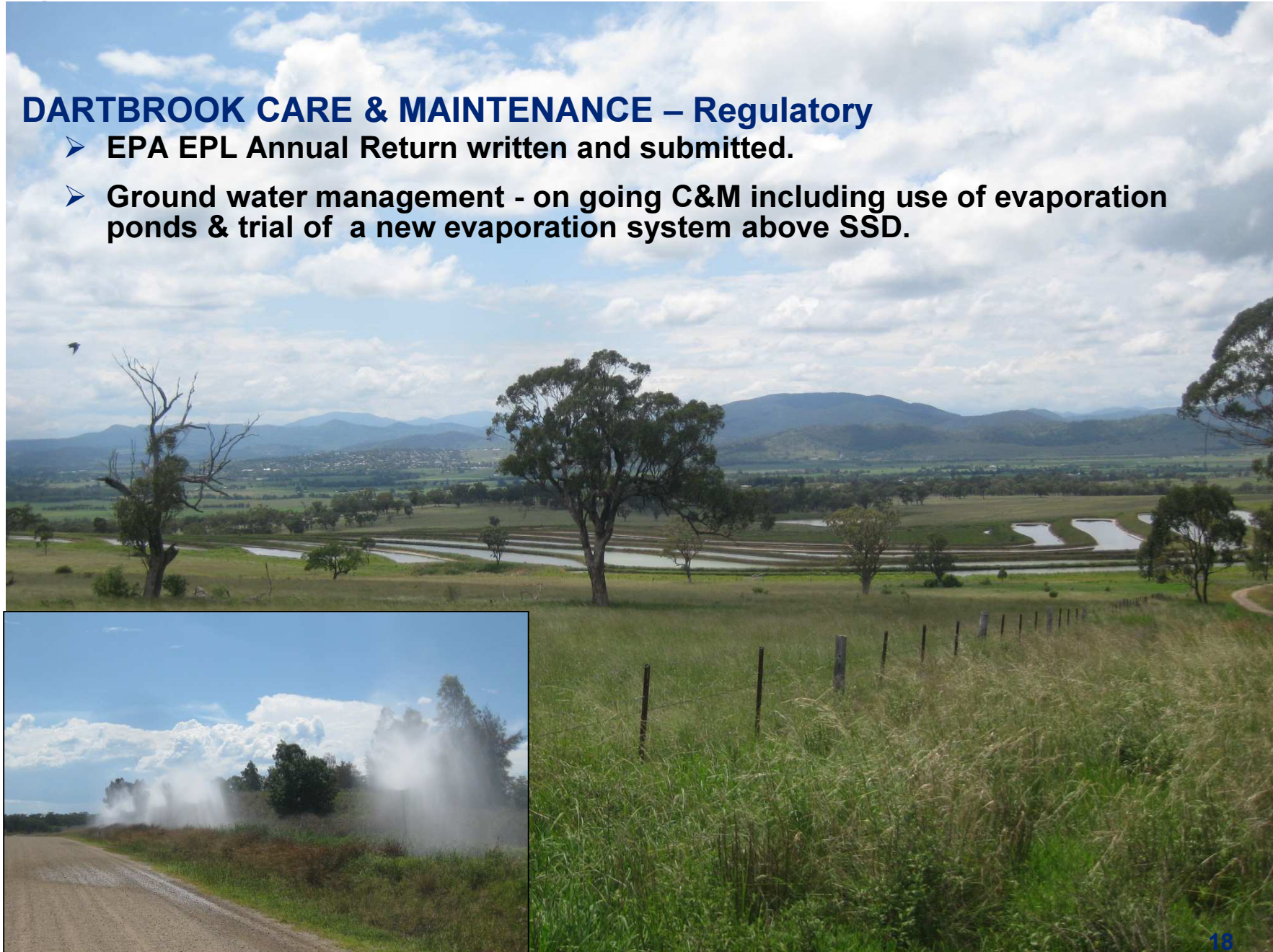


DARTBROOK CARE & MAINTENANCE – Regulatory



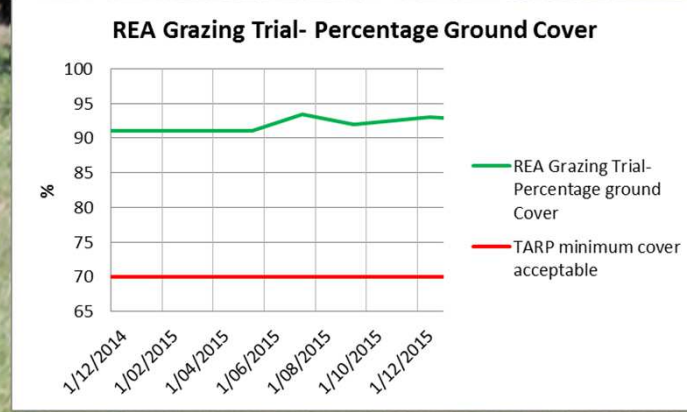
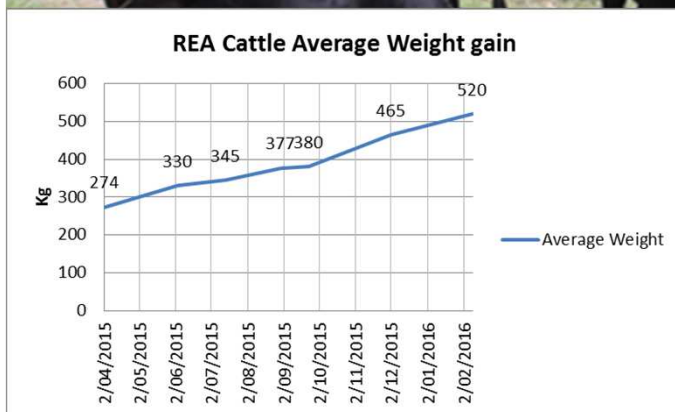
DARTBROOK CARE & MAINTENANCE – Regulatory

- **EPA EPL Annual Return written and submitted.**
- **Ground water management - on going C&M including use of evaporation ponds & trial of a new evaporation system above SSD.**



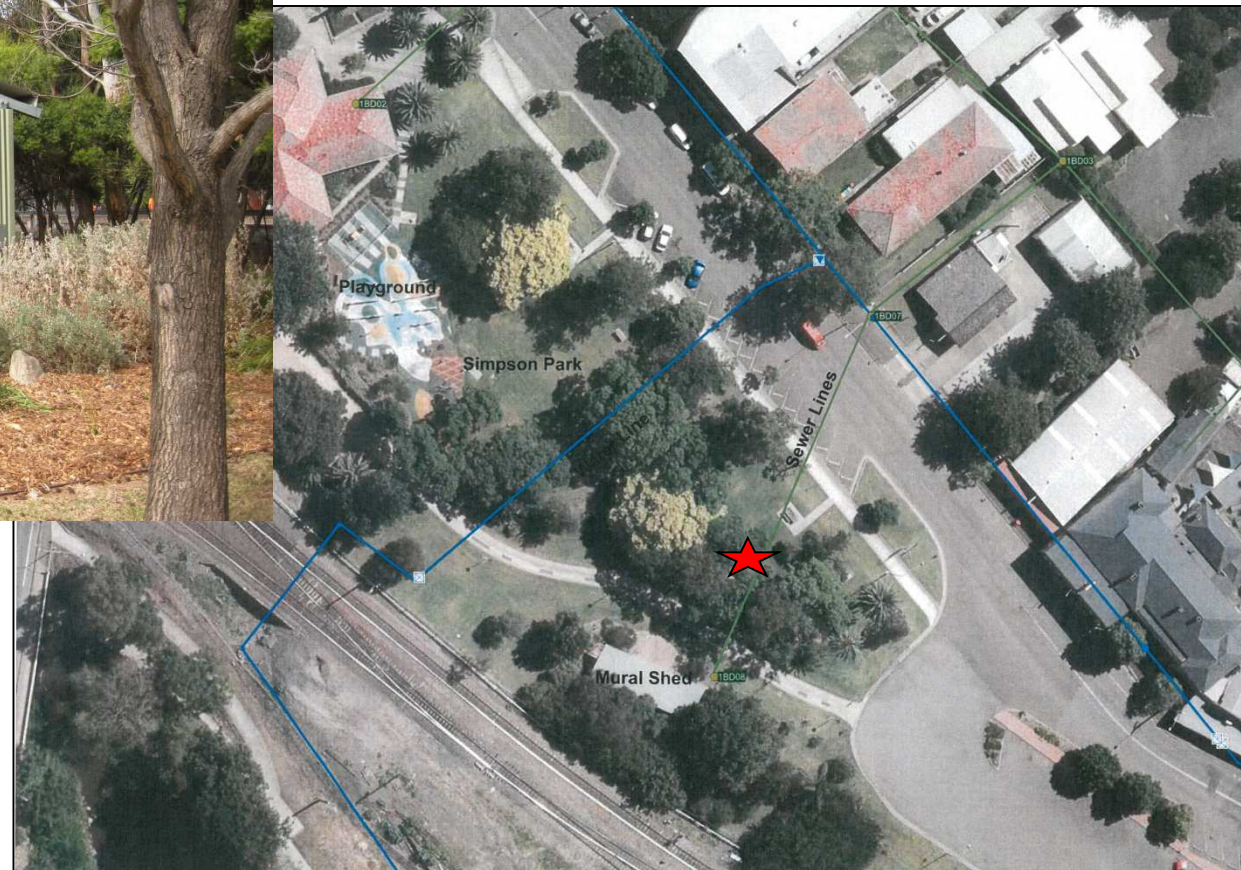
DARTBROOK CARE & MAINTENANCE – Regulatory

- Sustainable grazing demonstration on the REA ceased with the sale of the cattle in March. No adverse effects on the pasture.



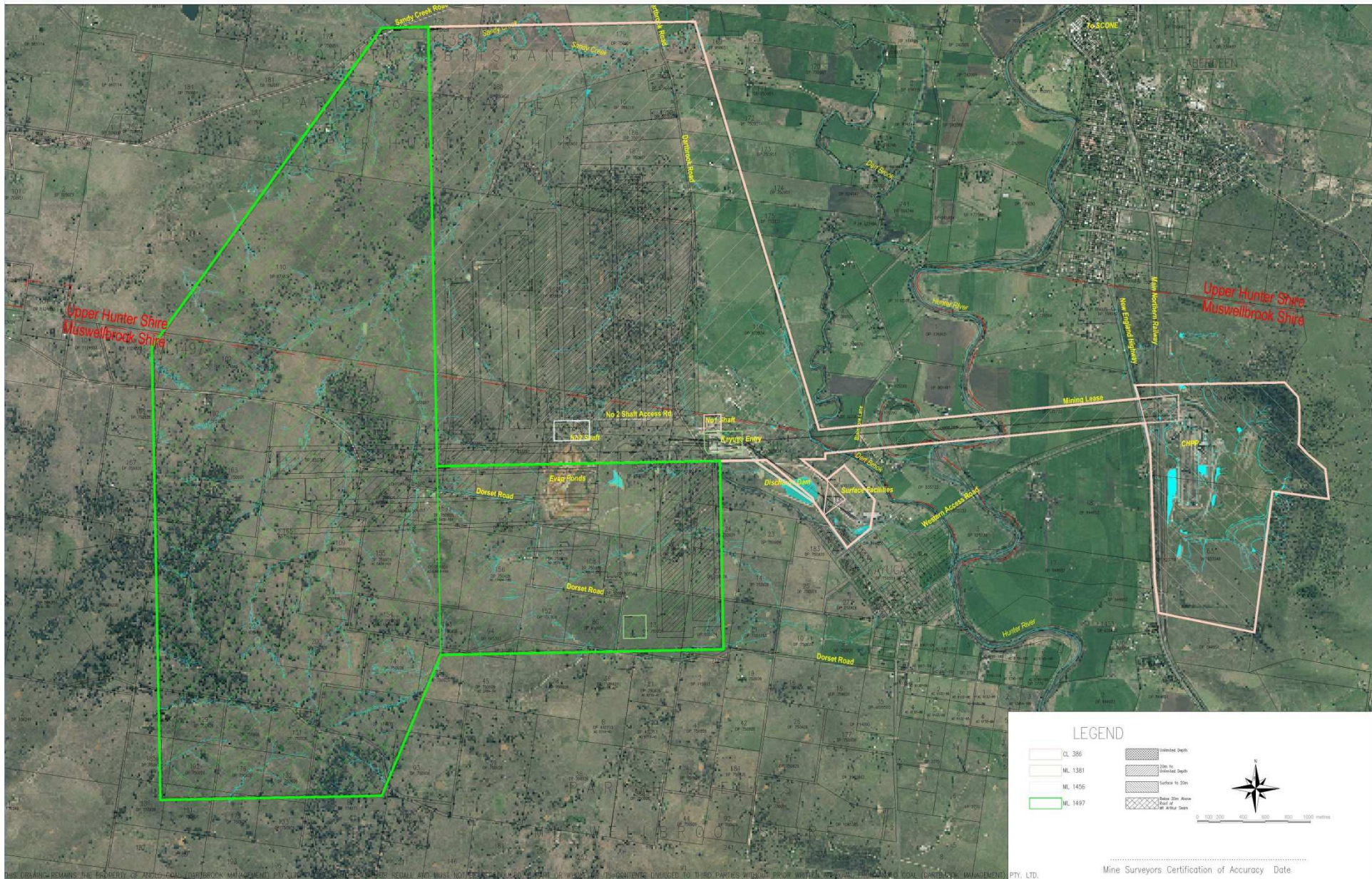
DARTBROOK CARE & MAINTENANCE – Scar tree relocation

Scar tree relocation onto non ARTC lands. Situation unchanged.



ACTIONS FROM THE PREVIOUS MINUTES

- To write to MSC seeking clarification re filling the MSC Staff Representative position – complete.
- MOP rehabilitation.



THIS DRAWING REMAINS THE PROPERTY OF ANGLCO COAL (DARTBROOK MANAGEMENT) PTY LTD. AND MUST NOT BE REPRODUCED OR TRANSMITTED IN ANY FORM OR BY ANY MEANS, ELECTRONIC OR MECHANICAL, INCLUDING PHOTOCOPYING, RECORDING, OR BY ANY INFORMATION STORAGE AND RETRIEVAL SYSTEM, WITHOUT THE WRITTEN PERMISSION OF ANGLCO COAL (DARTBROOK MANAGEMENT) PTY, LTD.

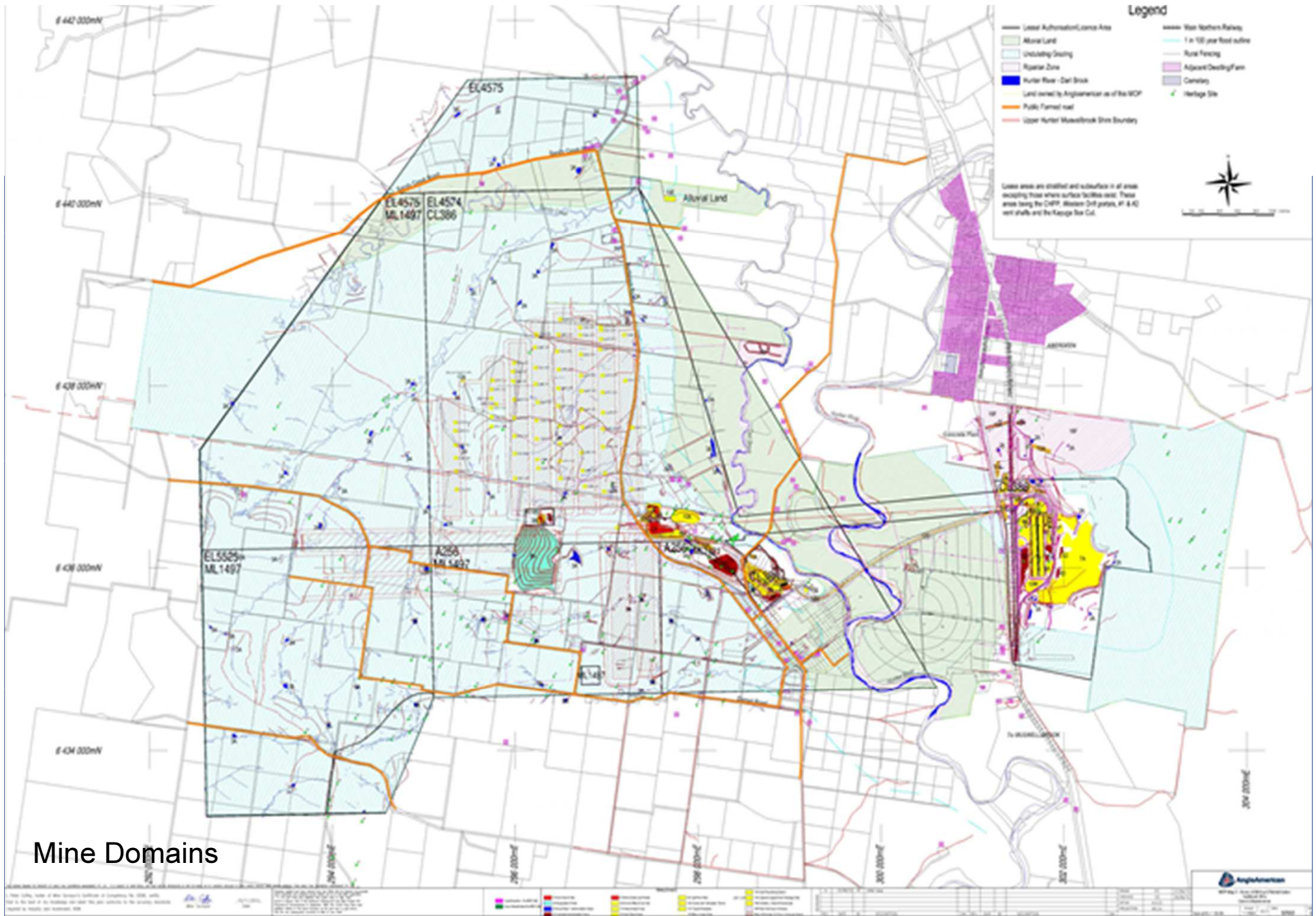
Mine Surveyors Certification of Accuracy Date



REV.	DATE	BY	DESCRIPTION	CHK.
09/05/03				
REVISIONS				
P	16/02/10	PC	Shire Boundary Highlighted	DS
Q	15/12/10	PC	Updated to 2010	DS
R	18/02/11	PC	Logo Modified to AngloAmerican	DS
S	12/02/13	PC	Air Photo Updated	DS
O	21/12/09	PC	A3 Layout Scale Changed to 1:30000	DS

**Dartbrook Mine
Mine Context Plan
PLAN 1**

Datum :	AHD	SCALE	A3	DRG.	29411	REV.	S
GRID :	MGA(56)	1:30000					





Label	Primary Domain	Rehabilitation Objective / post mining land use
1A	Fan Housing – Fan House 1 is operational	Infrastructure decommissioned and removed, site rehabilitated to Improved and/or Native pastures with scattered trees to be incorporated into the surrounding cattle grazing land use.
2A	Evaporation Ponds	Ponds decommissioned, filled in rehabilitated to Improved and/or Native pastures with scattered trees to be incorporated into the surrounding cattle grazing land use.
3A	Rural stock water / sedimentation dams	Dams to continue being used for rural purposes and stock water
4D	Industrial Sedimentation dams	Dams remaining for the semi industrial purpose for sediment control
5A	Mine Entries and Portals	To be decommissioned, shaped and rehabilitated to Improved and/or Native pastures with scattered trees to be incorporated into the surrounding cattle grazing land use.
6D	Administration Office and car park	To remain as Infrastructure for Industrial / Residential / Rural purposes
7A	Rehabilitated areas	Already rehabilitated to Improved and/or Native pastures with scattered trees to be incorporated into the surrounding cattle grazing land use.
8A	Hard Stand Areas	To be decommissioned and rehabilitated to Improved and/or Native pastures with scattered trees to be incorporated into the surrounding cattle grazing land use.
9A	Coal Preparation Plant	To be decommissioned and rehabilitated to Improved and/or Native pastures with scattered trees to be incorporated into the surrounding cattle grazing land use.
10A	Overburden stockpiles / bunds	To be decommissioned and rehabilitated to Improved and/or Native pastures with scattered trees to be incorporated into the surrounding cattle grazing land use.
11A	Topsoil stockpiles	To be decommissioned and rehabilitated to Improved and/or Native pastures with scattered trees to be incorporated into the surrounding cattle grazing land use.
12D	Main access road	To remain to assist the local residents
13A	Goaf dewatering pumping system	Infrastructure decommissioned and removed, site rehabilitated to Improved and/or Native pastures with scattered trees to be incorporated into the surrounding cattle grazing land use.
14A	Area serviced by goaf drainage facilities. Area is currently grazed by cattle	Infrastructure decommissioned, top of pipe removed, site rehabilitated to improved and/or Native pastures with scattered trees to be incorporated into the surrounding cattle grazing land use.
15E	Cemetery, Rosehill house	Preserve for community benefit
16F	Discretionary Biodiversity	Forestry and Red Gum areas – to remain an ACDM biodiversity or community asset.

OTHER GENERAL BUSINESS

- **Next Meeting & Communication.**

2016 Meeting dates

2016

January							February							March							April						
Sun	Mon	Tue	Wed	Thu	Fri	Sat	Sun	Mon	Tue	Wed	Thu	Fri	Sat	Sun	Mon	Tue	Wed	Thu	Fri	Sat	Sun	Mon	Tue	Wed	Thu	Fri	Sat
					1	2		1	2	3	4	5	6			1	2	3	4	5						1	2
3	4	5	6	7	8	9	7	8	9	10	11	12	13	6	7	8	9	10	11	12	3	4	5	6	7	8	9
10	11	12	13	14	15	16	14	15	16	17	18	19	20	13	14	15	16	17	18	19	10	11	12	13	14	15	16
17	18	19	20	21	22	23	21	22	23	24	25	26	27	20	21	22	23	24	25	26	17	18	19	20	21	22	23
24	25	26	27	28	29	30	28	29						27	28	29	30	31	24	25	26	27	28	29	30		
31																											

May							June							July							August						
Sun	Mon	Tue	Wed	Thu	Fri	Sat	Sun	Mon	Tue	Wed	Thu	Fri	Sat	Sun	Mon	Tue	Wed	Thu	Fri	Sat	Sun	Mon	Tue	Wed	Thu	Fri	Sat
1	2	3	4	5	6	7				1	2	3	4						1	2		1	2	3	4	5	6
8	9	10	11	12	13	14	5	6	7	8	9	10	11	3	4	5	6	7	8	9	7	8	9	10	11	12	13
15	16	17	18	19	20	21	12	13	14	15	16	17	18	10	11	12	13	14	15	16	14	15	16	17	18	19	20
22	23	24	25	26	27	28	19	20	21	22	23	24	25	17	18	19	20	21	22	23	21	22	23	24	25	26	27
29	30	31					26	27	28	29	30			24	25	26	27	28	29	30	28	29	30	31			
														31													

September							October							November							December						
Sun	Mon	Tue	Wed	Thu	Fri	Sat	Sun	Mon	Tue	Wed	Thu	Fri	Sat	Sun	Mon	Tue	Wed	Thu	Fri	Sat	Sun	Mon	Tue	Wed	Thu	Fri	Sat
				1	2	3						1			1	2	3	4	5				1	2	3		
4	5	6	7	8	9	10	2	3	4	5	6	7	8	6	7	8	9	10	11	12	4	5	6	7	8	9	10
11	12	13	14	15	16	17	9	10	11	12	13	14	15	13	14	15	16	17	18	19	11	12	13	14	15	16	17
18	19	20	21	22	23	24	16	17	18	19	20	21	22	20	21	22	23	24	25	26	18	19	20	21	22	23	24
25	26	27	28	29	30		23	24	25	26	27	28	29	27	28	29	30			25	26	27	28	29	30	31	
							30	31																			

**THANK
YOU**