



Real Mining. Real People. Real Difference.

DARTBROOK COMMUNITY CONSULTATIVE COMMITTEE

14 September 2016

A faint, light brown topographic map outline is visible in the background, showing various contour lines and geographical features.

CONFIDENTIAL

AGENDA

1 Opening and Apologies

2 Declaration of Pecuniary Interest

3 Correspondence

4 Confirmation of previous Minutes

5 Business Arising

6 Complaints Summary

7 Incidents – trespass (2)

- Blairemore pipe leakage
- Power outage / fire

8 General Business

- Environmental Monitoring
- Exploration Programme
- Current & Ongoing issues
- Action from previous minutes

9 Other Business

- Other

10 Next Meeting

11 Meeting Close

GENERAL BUSINESS - MONITORING

- **Rehabilitation & Biodiversity – satisfactory & carried out monthly**

- **High Volume Air Sampling**

- **Dust Deposition**

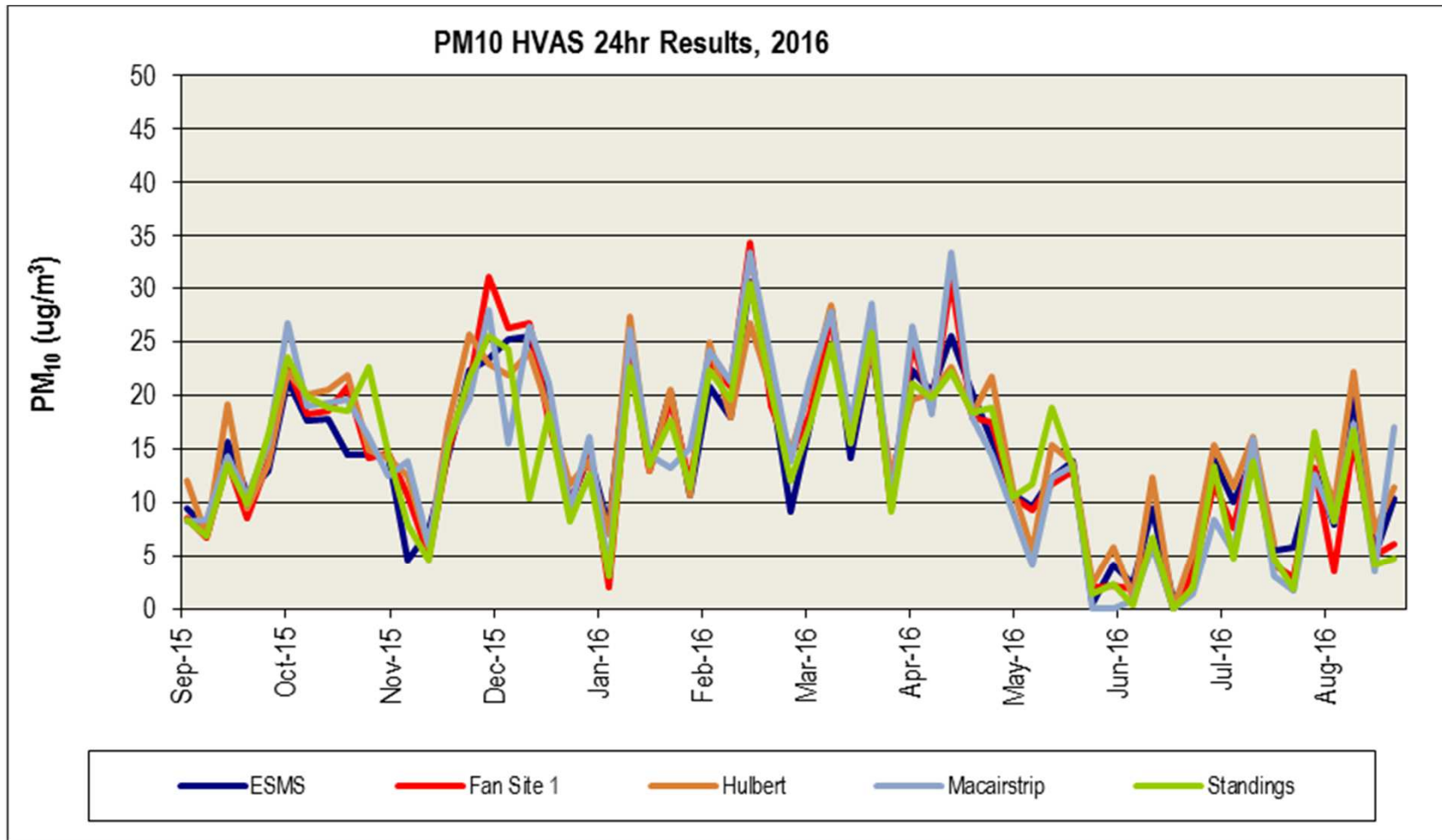
- **Dust Isopleth**

- **Surface Water – Hunter River Salinity**

- **Surface Water – Dart Brook Salinity**

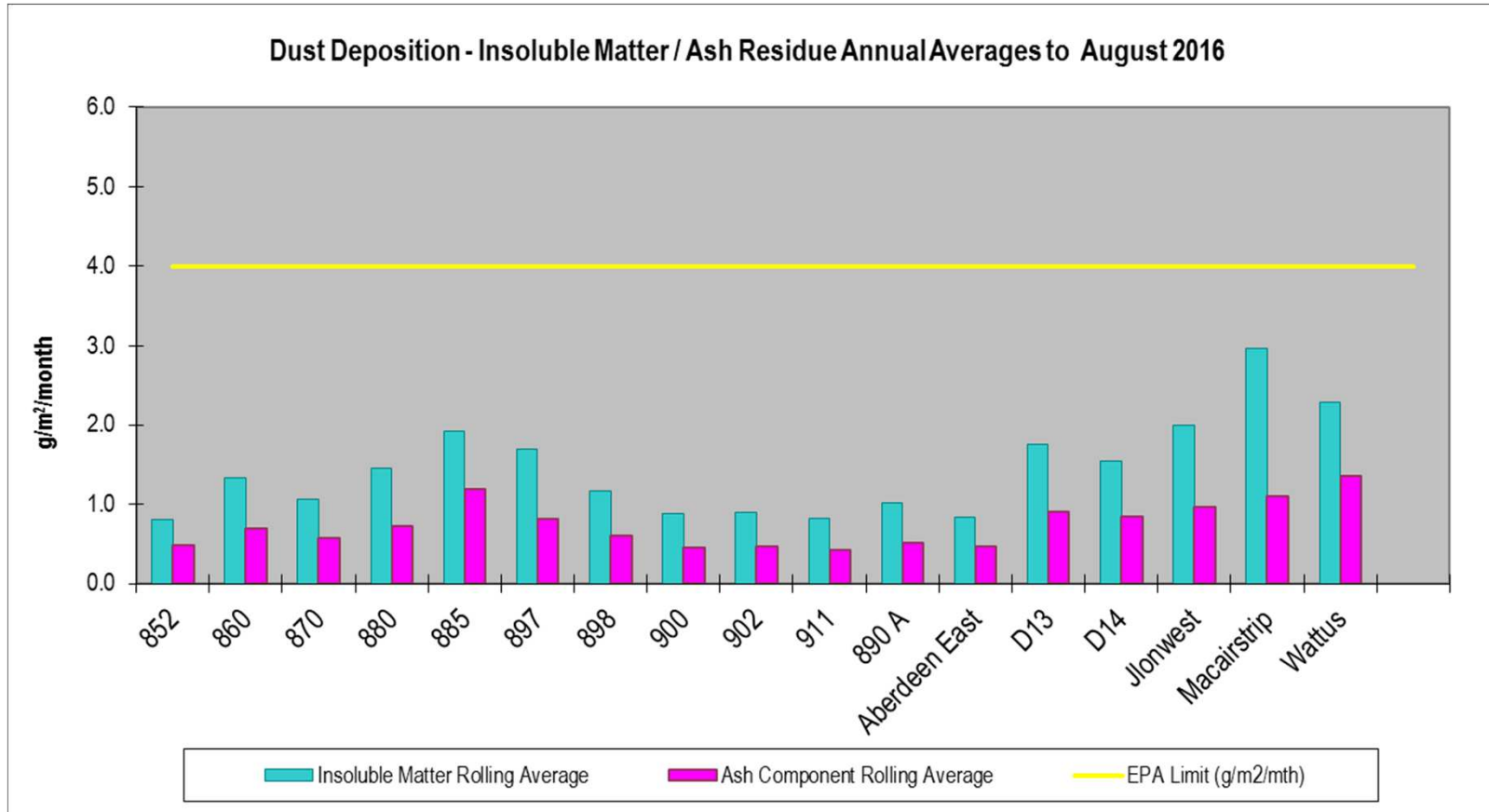
- **Rainfall**

2015 HIGH VOLUME AIR SAMPLER DUST MONITORING



PM10 (Particulate Matter <10µm) NEPC guideline limit is 50ug/m³

DEPOSITIONAL DUST MONITORING.



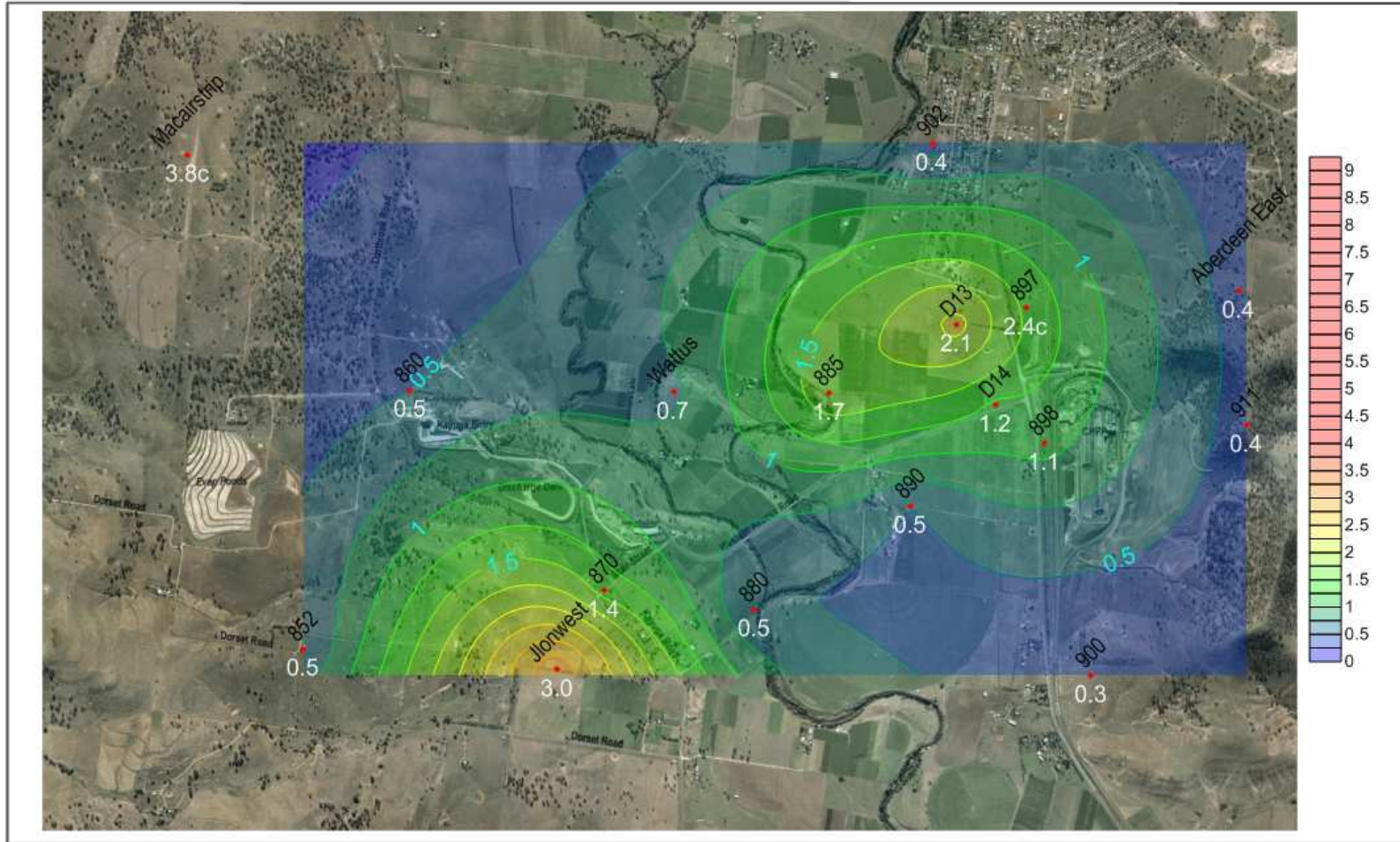
Insoluble Matter is Ash + Combustible Matter

Ash is more representative of dust component, remainder is typically organic matter (e.g. insects)

Annual average below limit of 4g/m²/month at all sites

DUST ISOPLETH FOR AUGUST 2016

60343417 9/9/16 CB www.aecom.com



AECOM



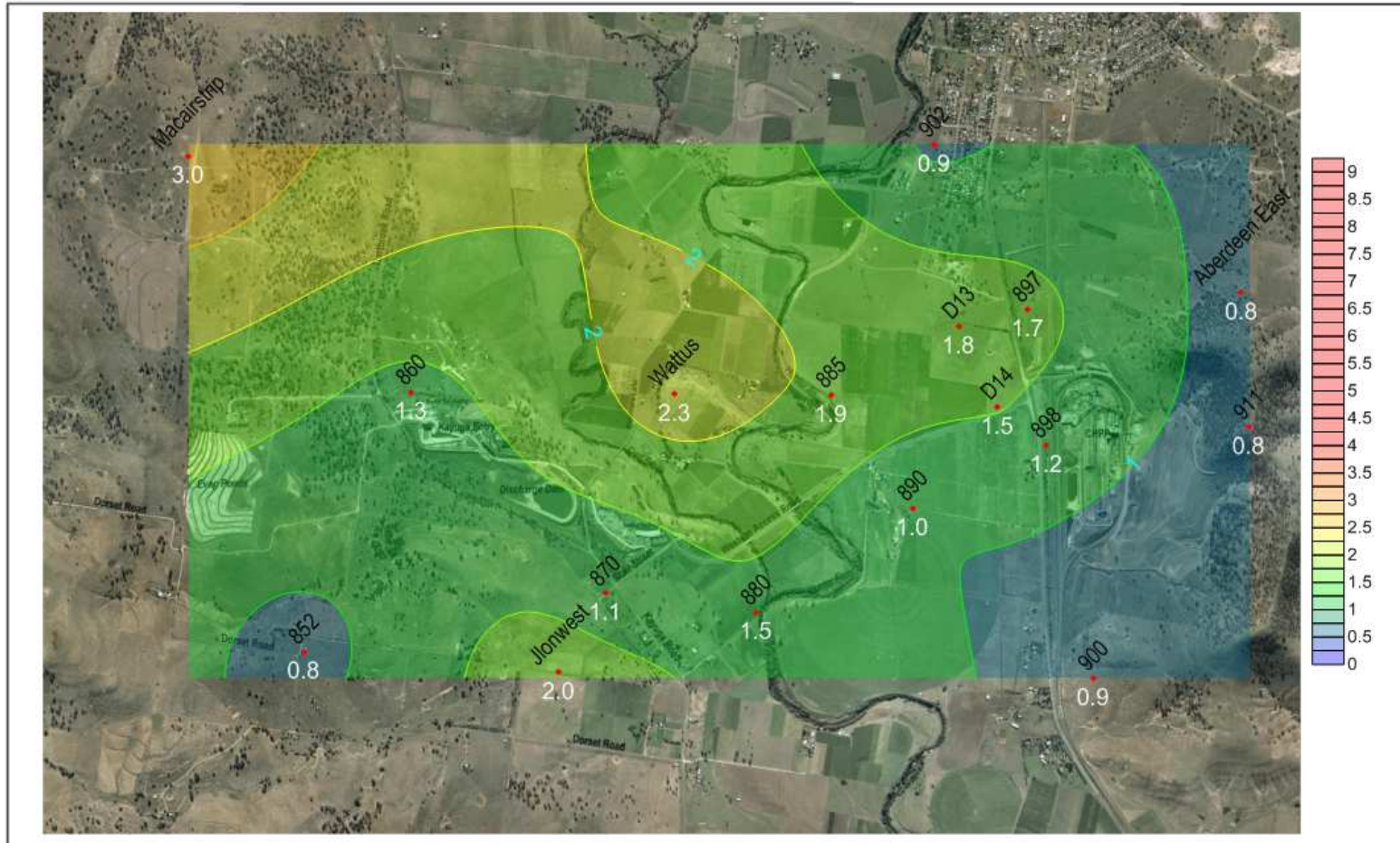
• Dust Gauge Locations
 — Dust Deposition Contours
 Units: g/m²·month

Figure 1 Depositional Dust Contours - August 2016

Anglo Coal - Dartbrook
 Monthly Environmental Monitoring Report
 Aberdeen NSW

DUST ISOPLETH FOR ANNUAL AVERAGE AUGUST 2016

60343417 9/9/16 CB www.aecom.com



AECOM

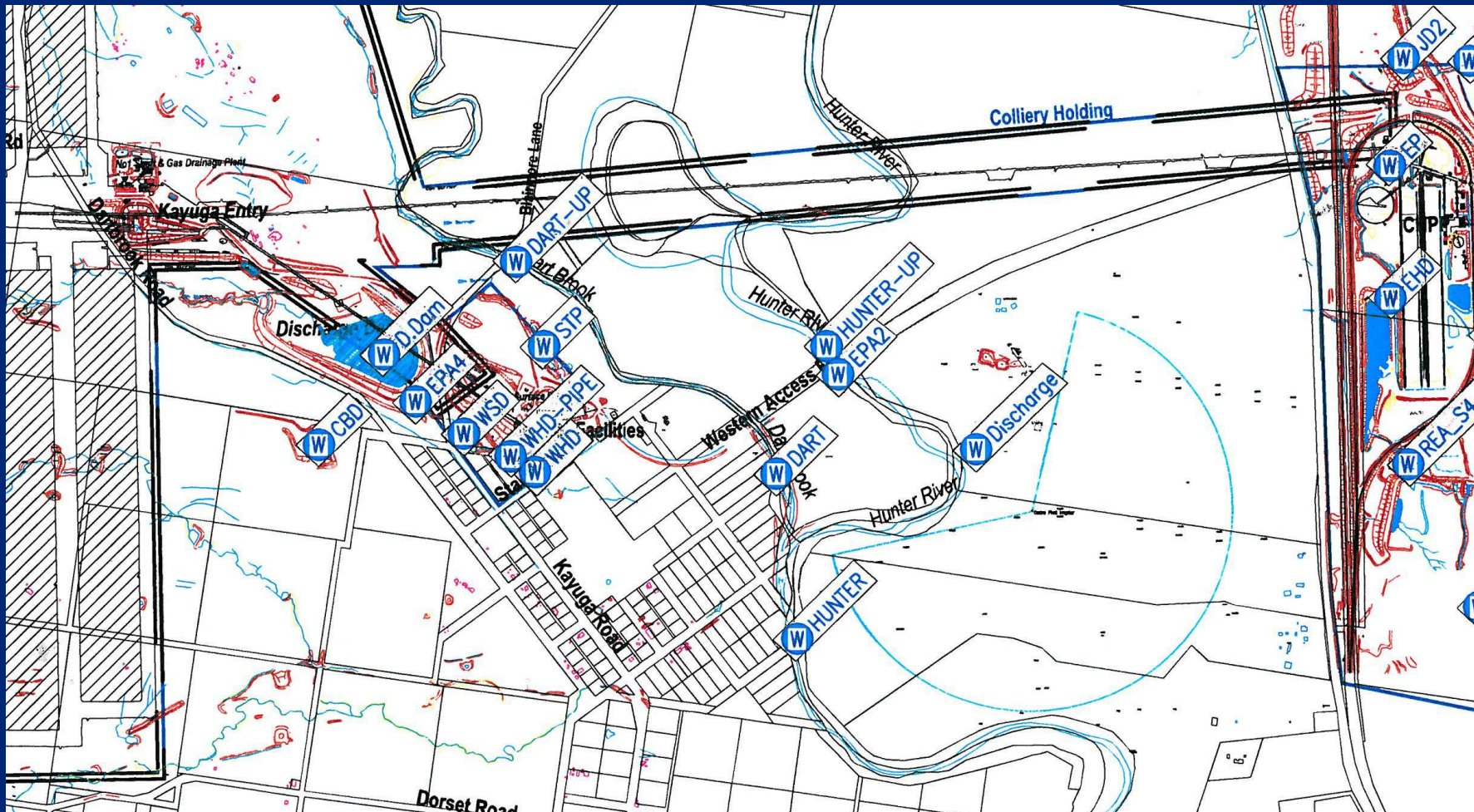


• Dust Gauge Locations
 — Dust Deposition Contours
 Units: g/m² month

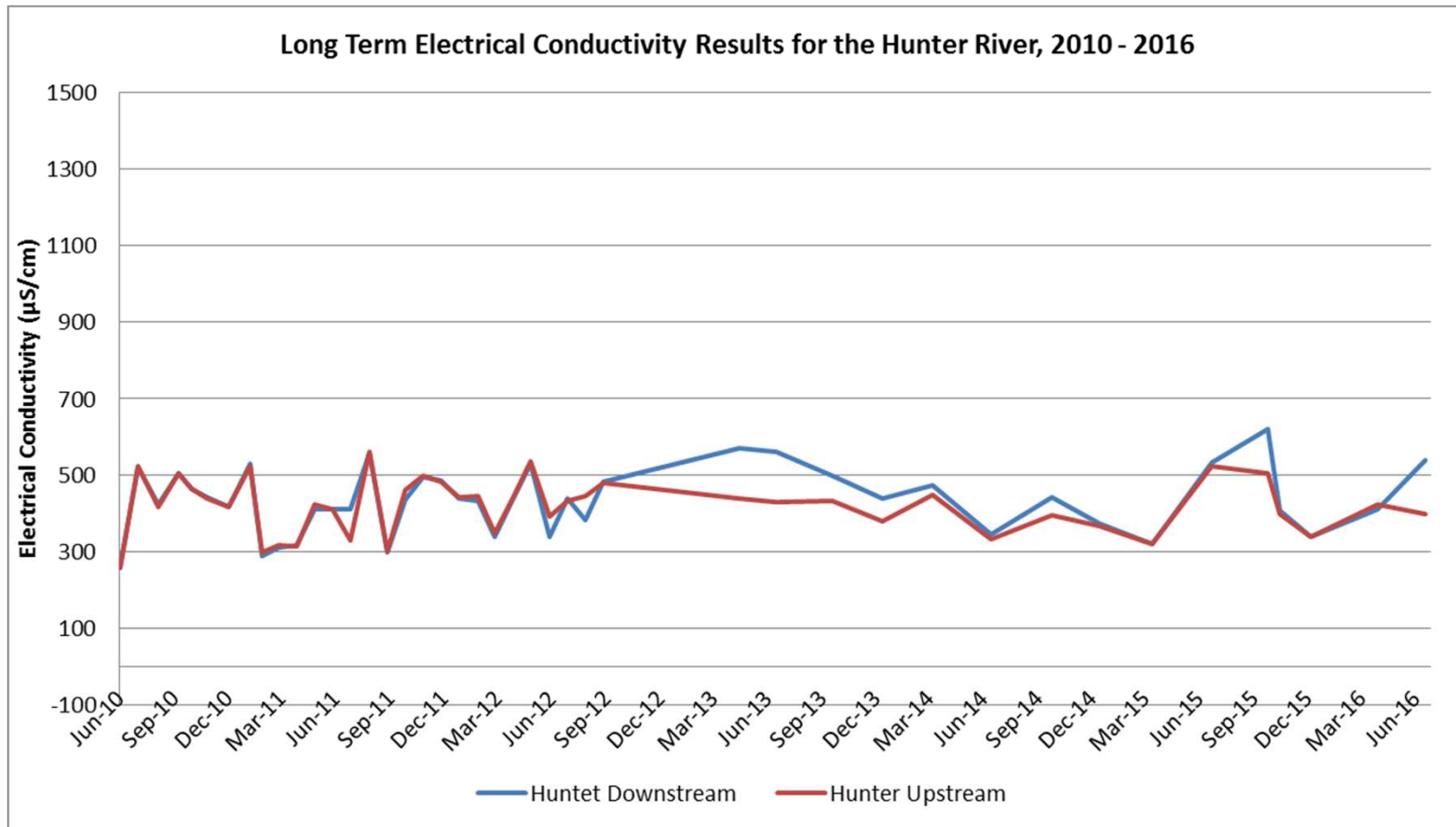
Figure 1 Depositional Dust Contours - Rolling Annual Average, August 2016

Anglo Coal - Dartbrook
 Monthly Environmental Monitoring Report
 Aberdeen NSW

Surface water monitoring locations extract

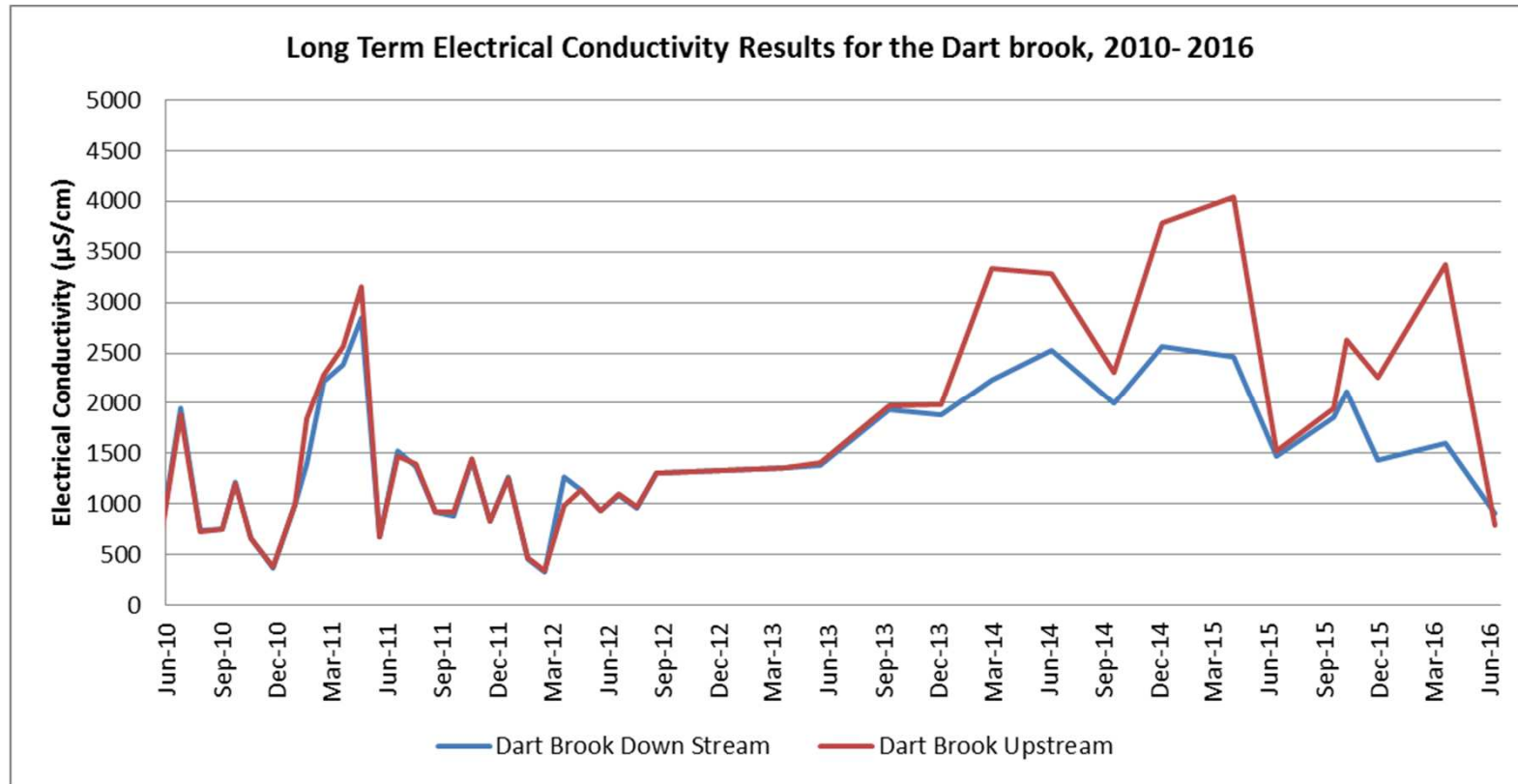


SURFACE WATER SALINITY – HUNTER RIVER



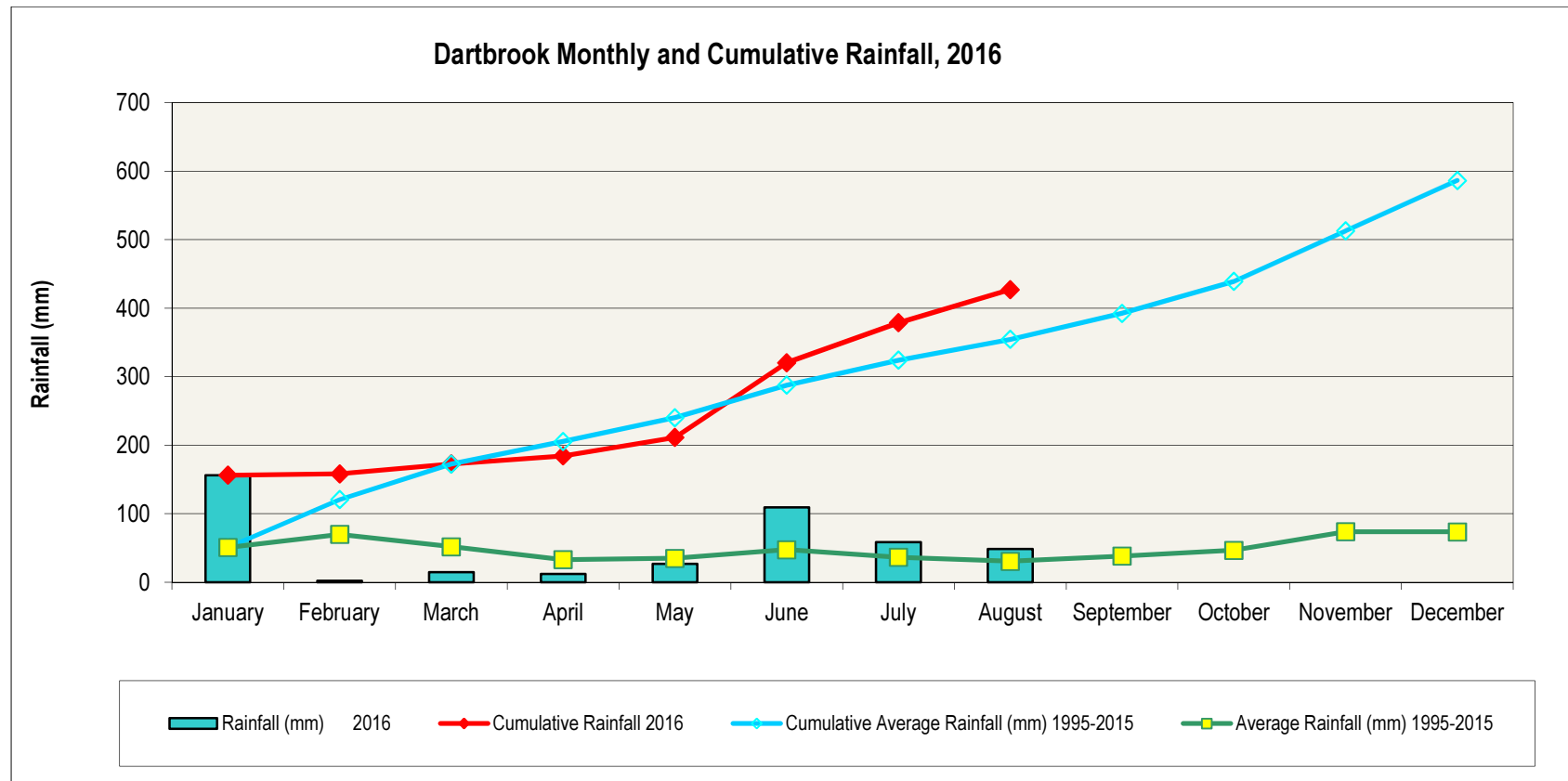
- Electrical Conductivity – reducing marginal difference between Hunter River sites upstream and downstream of the Mine.

SURFACE WATER SALINITY – DART BROOK

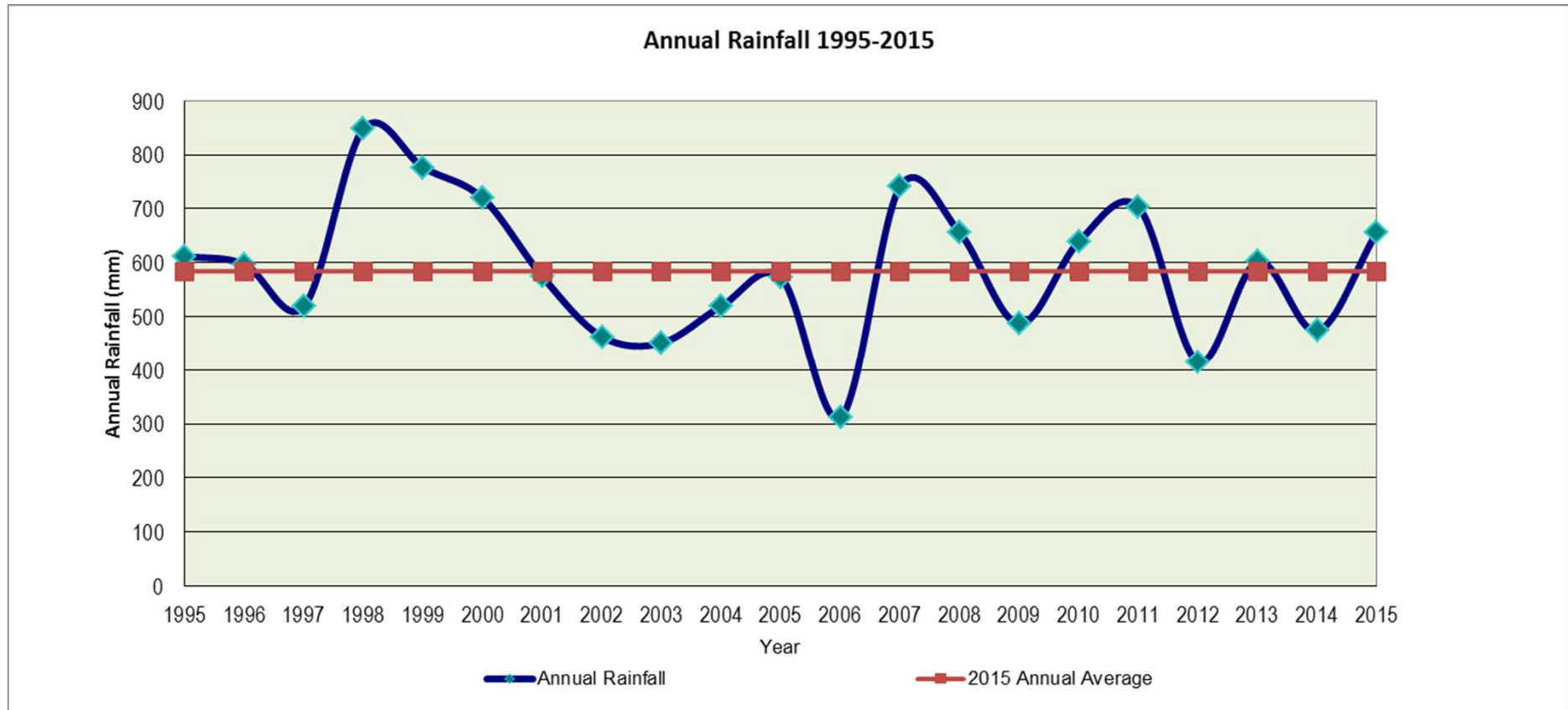


- Electrical Conductivity – Upstream EC fluctuates with flow rates (influenced by rainfall) and downstream EC may be influenced by Hunter River flows.

METEOROLOGICAL DATA



METEOROLOGICAL DATA – life of mine annual average rainfall



1995 – 2015 average = 584mm

2014 = 473mm which was 112mm below annual average

2015 = 657mm which was 73mm above annual average

GENERAL BUSINESS - DARTBROOK ACTIVITIES

- **Sale progressing**

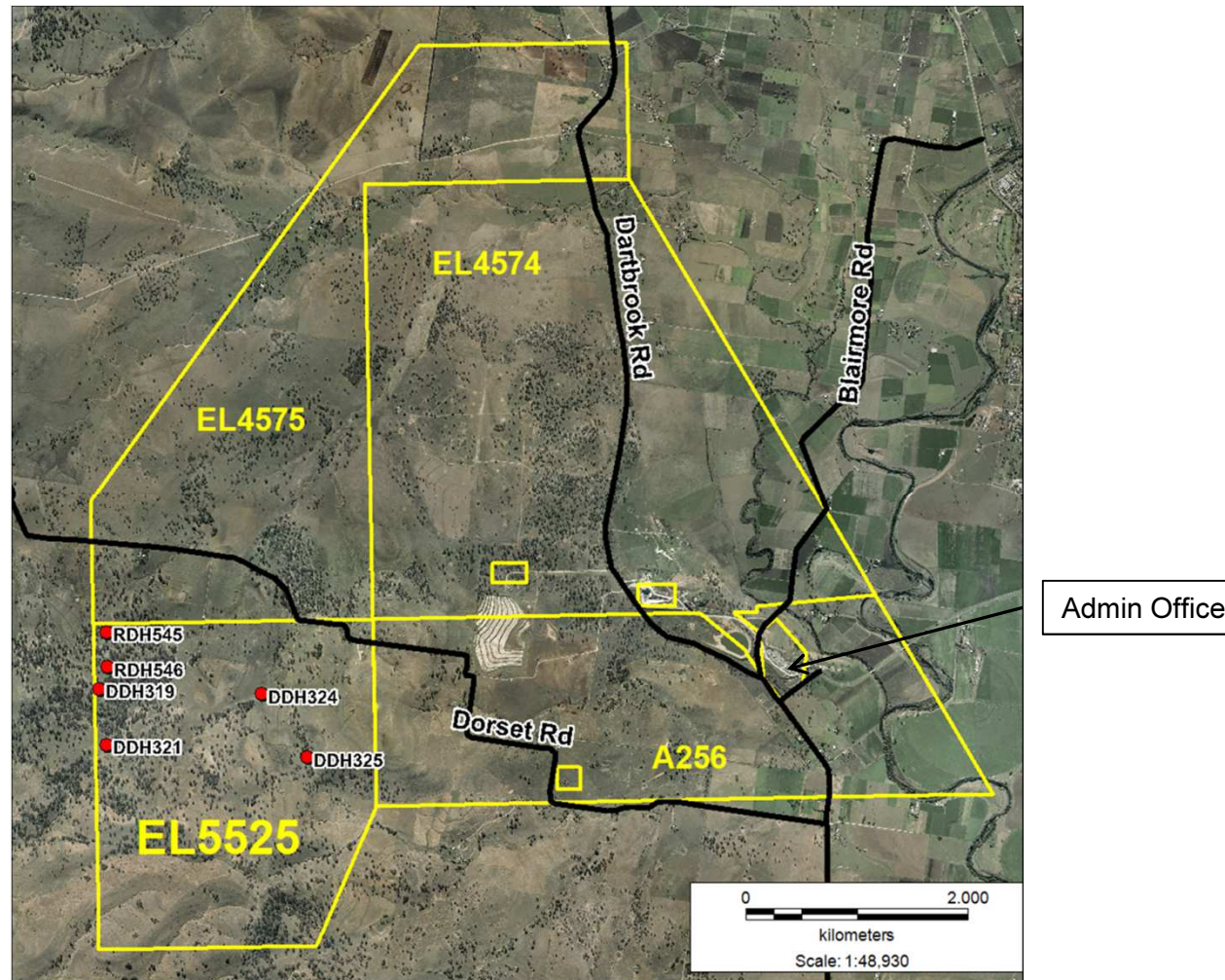
- **Exploration – EL5525 EMR for extension of lease.**

- **Projects – ceased.**

- **Care and Maintenance**
 - Rural Lands – Ongoing
 - Regulatory – Ongoing
 - Community - Ongoing

DARTBROOK CARE & MAINTENANCE – Exploration

- EL4575 extension application submitted
- EL5525 EMR for lease extension



DARTBROOK CARE & MAINTENANCE – Rural Lands

- **Pig & Roo control program continues. 2015 YTD 60 Roos. (NPWS licensed 200)**
- **Fencing – repairs Browns Mtn and Evap ponds**
- **Crash grazing REA rehabilitation and pasture assessment.**



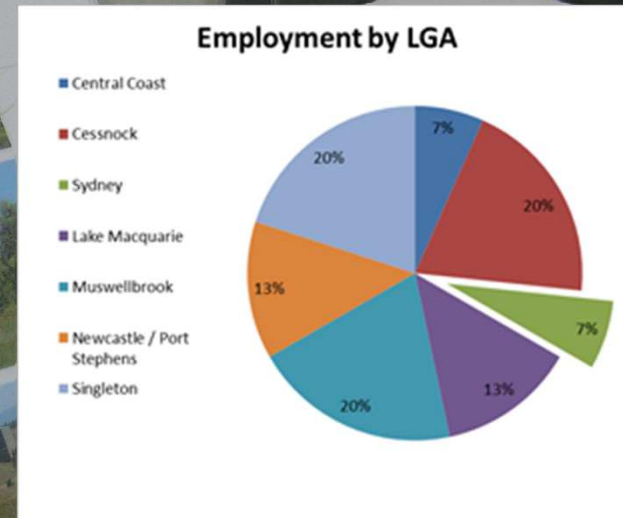
DARTBROOK CARE & MAINTENANCE – Rural

- **Weed control – African box thorn, African Olive, Green Cestrum & Tiger pear.**
- **Vegetation clearing near all monitoring locations & Dartmouth House.**
- **Ongoing property maintenance including cemetery**
- **Inspection & maintenance of Septic sewerage systems.**



DARTBROOK CARE & MAINTENANCE – Regulatory

- Responses to DPE re Annual Review (Annual Environmental Management Report) NB – Issues generally included, plus Workforce breakdown.



- APC visits facilitated.

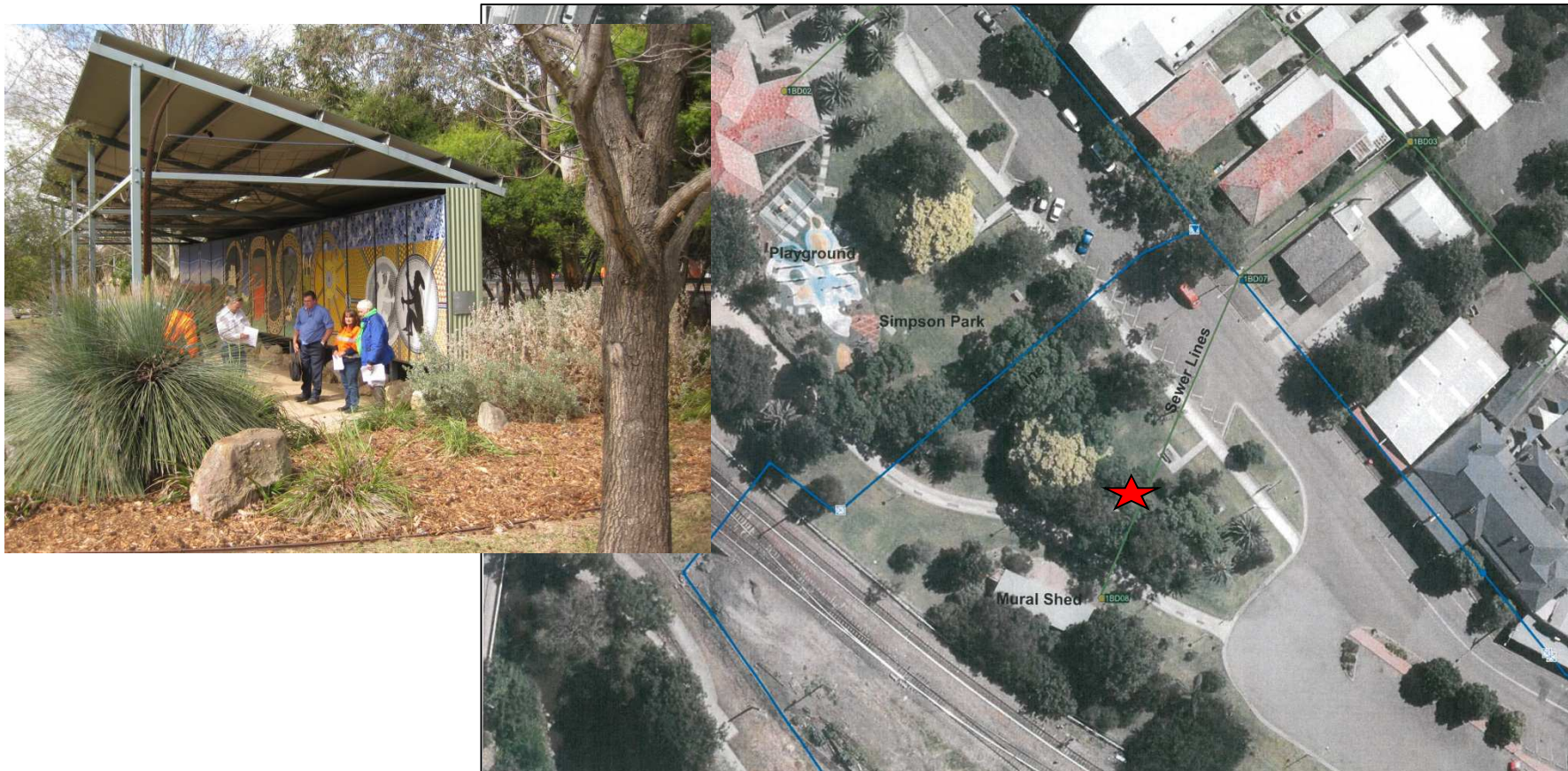
DARTBROOK CARE & MAINTENANCE – Regulatory

- **Vistor Esteeves (Water NSW) visit site re meter readings.**
- **HRSTS Annual Report submitted.**
- **2 HRSTS credits purchased at auction.**
- **Independent Compliance Audit (DA required)**
- **DRE inspection – weed control**
- **Review Complaints Handling Protocol and various Management Plans (Sponcom, Subsidence, Environmental Management System, Waste, Archaeological).**
- **DSC five yearly surveillance report.**
- **Discussions with MACHenergy (Mt Pleasant) re common boundary issues.**
- **Damp winter unable to evaporate much water – Wynn water level rising.**
- **Ground water management - on going C&M including use of evaporation ponds & new evaporation system above SDD.**



DARTBROOK CARE & MAINTENANCE – Scar tree relocation

Scar tree relocation onto MSC owned land. MA now signed. Site confirmed this week. Hope to complete in Q4.



DARTBROOK CARE & MAINTENANCE – Community



ACTIONS FROM THE PREVIOUS MINUTES

- A representative of the DRE be invited to the next CCC re the required security deposit. – New DRE rep appointed very recently. To try later when more familiar with the site.
- A Dartbrook representative be invited to explain the serviceability of Dartbrook's existing infrastructure - Final stages of the sale imminent. APC still determining the condition of the infrastructure. Staff also not available due to leave and workload.

OTHER GENERAL BUSINESS

- **Committee Members**
- **Next Meeting & Communication.**

2016 Meeting dates

2016

January							February							March							April						
Sun	Mon	Tue	Wed	Thu	Fri	Sat	Sun	Mon	Tue	Wed	Thu	Fri	Sat	Sun	Mon	Tue	Wed	Thu	Fri	Sat	Sun	Mon	Tue	Wed	Thu	Fri	Sat
					1	2	1	2	3	4	5	6			1	2	3	4	5						1	2	
3	4	5	6	7	8	9	7	8	9	10	11	12	13	6	7	8	9	10	11	12	3	4	5	6	7	8	9
10	11	12	13	14	15	16	14	15	16	17	18	19	20	13	14	15	16	17	18	19	10	11	12	13	14	15	16
17	18	19	20	21	22	23	21	22	23	24	25	26	27	20	21	22	23	24	25	26	17	18	19	20	21	22	23
24	25	26	27	28	29	30	28	29						27	28	29	30	31	24	25	26	27	28	29	30		
31																											

May							June							July							August						
Sun	Mon	Tue	Wed	Thu	Fri	Sat	Sun	Mon	Tue	Wed	Thu	Fri	Sat	Sun	Mon	Tue	Wed	Thu	Fri	Sat	Sun	Mon	Tue	Wed	Thu	Fri	Sat
1	2	3	4	5	6	7				1	2	3	4						1	2							
8	9	10	11	12	13	14	5	6	7	8	9	10	11	3	4	5	6	7	8	9	7	8	9	10	11	12	13
15	16	17	18	19	20	21	12	13	14	15	16	17	18	10	11	12	13	14	15	16	14	15	16	17	18	19	20
22	23	24	25	26	27	28	19	20	21	22	23	24	25	17	18	19	20	21	22	23	21	22	23	24	25	26	27
29	30	31					26	27	28	29	30			24	25	26	27	28	29	30	28	29	30	31			
														31													

September							October							November							December						
Sun	Mon	Tue	Wed	Thu	Fri	Sat	Sun	Mon	Tue	Wed	Thu	Fri	Sat	Sun	Mon	Tue	Wed	Thu	Fri	Sat	Sun	Mon	Tue	Wed	Thu	Fri	Sat
				1	2	3						1			1	2	3	4	5					1	2	3	
4	5	6	7	8	9	10	2	3	4	5	6	7	8	6	7	8	9	10	11	12	4	5	6	7	8	9	10
11	12	13	14	15	16	17	9	10	11	12	13	14	15	13	14	15	16	17	18	19	11	12	13	14	15	16	17
18	19	20	21	22	23	24	16	17	18	19	20	21	22	20	21	22	23	24	25	26	18	19	20	21	22	23	24
25	26	27	28	29	30		23	24	25	26	27	28	29	27	28	29	30				25	26	27	28	29	30	31
							30	31																			

**THANK
YOU**