



DARTBROOK MINE

ARCHAEOLOGY & CULTURAL HERITAGE MANAGEMENT PLAN

for Tetra Resources

25 January 2023

DOCUMENT CONTROL

Document Status

Issue	Description	Prepared By	Approved By	Date Issued
01	Draft for Kayuga Coal Review	Hansen Consulting	M Cook	11 July 2002
02	Draft for NPWS, UHWTC, and WLALC Review	Hansen Consulting	M Cook	8 August 2002
03	Draft for DUAP Approval	Hansen Consulting	T Wilmott	11 September 2002
04	Version Approved by Planning NSW on 09/12/02	Hansen Consulting	T Wilmott	10 December 2002
05	Scheduled review	Hansen Consulting	J Fittler	10 August 2011
06	Updated for Recommencement of Mining. Draft for RAPs consultation	James Bailey & Associates	J Beatty	30 May 2022
07	Updated following RAPs consultation	James Bailey & Associates	J Beatty	29 June 2022
08	Updated for recommencement of Mining under MOD7	James Bailey & Associates	J Beatty	25 October 2022
09	Updated following regulatory consultation	James Bailey & Associates	J Beatty	28 October 2022
10	Version Approved by Department of Planning and Environment NSW on 25/01/23	James Bailey & Associates	J Beatty	25 January 2023

Document Details

Project Name	Dartbrook Mine
Document Title	Archaeology & Cultural Heritage Management Plan
Client	Tetra Resources
Client Address	GPO Box 3323, Brisbane QLD 4001
Author	James Bailey & Associates Pty Ltd
Author Address	6/127-129 John Street, Singleton NSW 2330
Our Reference	230125 Tetra Dartbrook ACHMP Management Plan

Distribution List

Copy No.	Distributed To
1.	Department of Planning and Environment
2.	Department of Planning and Environment – Environment and Heritage Group
3.	RAPs as listed in this document
4.	Dartbrook Website

CONTENTS

1. INTRODUCTION	1
1.1 Background	1
1.2 Site Layout	1
1.3 Purpose	6
1.4 Management Plan Requirements	6
1.5 Regulatory Framework	8
1.5.1 National Parks and Wildlife Act	8
1.5.2 Heritage Act	9
1.6 Stakeholder Consultation	9
2. ABORIGINAL CULTURAL HERITAGE	10
2.1 Archaeological Site Identification and Assessment	10
2.2 Management Strategies	12
2.2.1 Surface Facilities	12
2.2.2 Rejects Emplacement Area	13
2.2.3 Surface Areas Affected by Subsidence	13
2.2.4 Ventilation Shafts and Other Minor Surface Infrastructure Areas	13
2.2.5 Unaffected Areas	13
3. NON-INDIGENOUS HERITAGE	15
3.1 Heritage Sites	15
3.2 Management Strategies	15
4. CONTINGENCY PLAN	18
4.1 Unanticipated Impacts	18
4.2 Unanticipated Finds	18
5. MONITORING AND REPORTING	20
5.1 Monitoring	20
5.2 Reporting	20
6. RESPONSIBILITIES	21
7. REVIEW REQUIREMENTS	22
8. REFERENCES	23
9. ABBREVIATIONS	24

TABLES

Table 1	Management Plan Requirements	6
Table 2	Listed Heritage Items	15
Table 3	Management Responsibilities	21

FIGURES

Figure 1	Regional Locality	3
Figure 2	Dartbrook Mine Layout – East Site.....	4
Figure 3	Dartbrook Mine Layout – West Site	5
Figure 4	Aboriginal Heritage Sites	11
Figure 5	Management of Aboriginal Heritage Sites - West Site.....	14
Figure 6	Non-Indigenous Heritage Sites	17

APPENDICES

Appendix A	Stakeholder Consultation
Appendix B	Aboriginal Heritage Sites Within the Dartbrook Mining Leases

1. INTRODUCTION

1.1 BACKGROUND

Dartbrook Mine is an unincorporated Joint Venture (Dartbrook Joint Venture) between Australian Pacific Coal (APC), Trepang Services Pty Ltd (Trepang), M Resources Pty Ltd (MRes) and Tetra Resources Pty Ltd (Tetra). Dartbrook Operations Pty Ltd will be the appointed operating management company and the Mine Operator under Section 5 of the Work Health and Safety (Mines and Petroleum Sites) Regulation 2022 (NSW). The Dartbrook Joint Venture will acquire APC Dartbrook Management Pty Ltd ABN 62 007 377 577 (holder of Development Consent and Environment Protection Licence) and APC Dartbrook Pty Ltd ABN 46 000 012 813 (holder of mining and coal authorities).

Dartbrook is located approximately 10 kilometres (km) north-west of Muswellbrook and 4.5 km south-west of the village of Aberdeen in New South Wales (NSW) (see **Figure 1**). Dartbrook operated as an underground longwall coal mine from 1993 until December 2006, when it was placed in care and maintenance by the previous owner, Anglo Coal (Dartbrook Management) Pty Ltd (ACDM). The mine was acquired by Australian Pacific Coal (APC) in 2016 and remained in care and maintenance.

Dartbrook Mine is managed in accordance with Development Consent DA 231-7-2000 (Development Consent) granted on 28 August 2001 under the *Environmental Planning and Assessment Act 1979* (EP&A Act). DA 231-7-2000 originally allowed for underground longwall mining and associated surface activities to be carried out until 5 December 2022.

In February 2018, APC lodged an application to modify DA 231-07-2000 (MOD7) to provide further operational options for Dartbrook (in addition to those already approved) including the recommencement of mining via limited bord and pillar methodology within the Kayuga Seam and to extend the approval period under DA 231-07-2000 by 5 years (i.e. to 5 December 2027).

DA 231-07-2000 (MOD7) was determined by the NSW Independent Planning Commission (IPCN) on 9 August 2019. The IPCN approved the proposed recommencement of mining activities but not the proposed five-year extension to the consent approval period. Without the extension to operate under DA 231-07-2000 for a further five years it was impractical to recommence mining at Dartbrook. In November 2019, an appeal was lodged against the IPCN determination of MOD7 in the NSW Land and Environment Court.

The MOD7 application was the subject of a conciliation conference conducted pursuant to Section 34 of the *Land and Environment Court Act 1979* (LEC Act). APC entered into a Section 34 agreement with the Minister for Planning and Public Spaces on 21 December 2021. This agreement gave effect to MOD7 and extended the approved duration of mining operations until 5 December 2027.

Operations at Dartbrook are proposed to commence from 1 December 2022. Recommencement will involve a re-establishment period of up to 6 months followed by a ramp up of production to produce an initial target of approximately 3 million tonnes per annum (Mtpa) of Run of Mine (ROM) coal subject to receiving post approvals which are required prior to production.

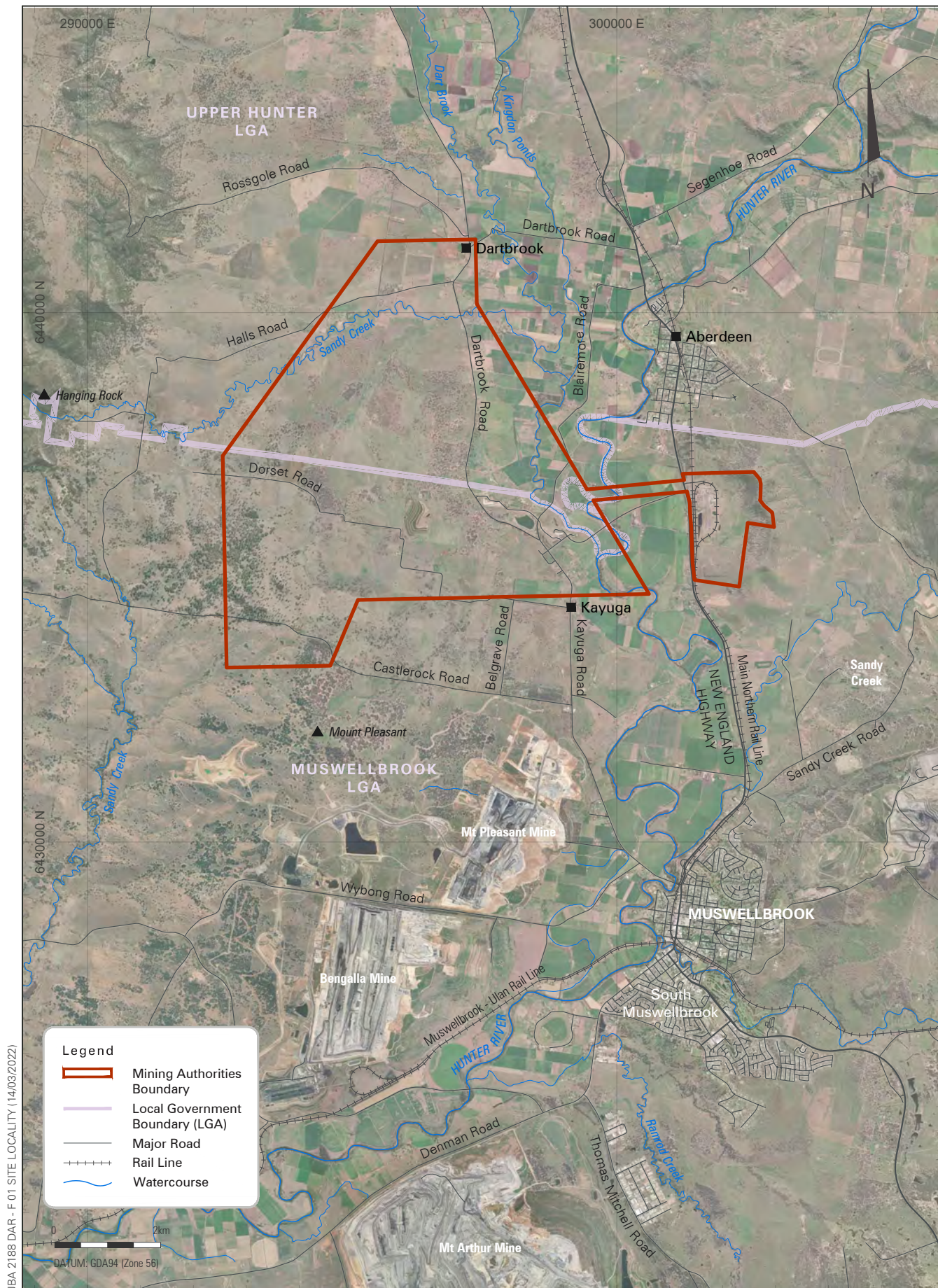
1.2 SITE LAYOUT

During care and maintenance, all mining and coal production ceased, however the mine surface infrastructure and facilities were maintained to enable recommissioning of operations in the future.

The Dartbrook Mine generally consists of the following main components:

- West Site surface facilities including workshop and maintenance facilities, administration building and underground mine portals;
- East Site surface facilities including the Coal Handling and Preparation Plant (CHPP), rail loop, train loading facilities and the Rejects Emplacement Area (REA);
- Wynn Seam underground mine workings which are decommissioned and are used for tailings disposal and mine water storage;
- Kayuga Seam underground mine workings, where mining is proposed. This was the active workings up until the commencement of care and maintenance. The previously mined longwall panels in the Kayuga Seam (KA101-103) were sealed during care and maintenance; and
- Hunter Tunnel which connects the underground mine workings to the East Site surface facilities.

Figure 2 and **Figure 3** shows the location of these features of the Dartbrook Mine.

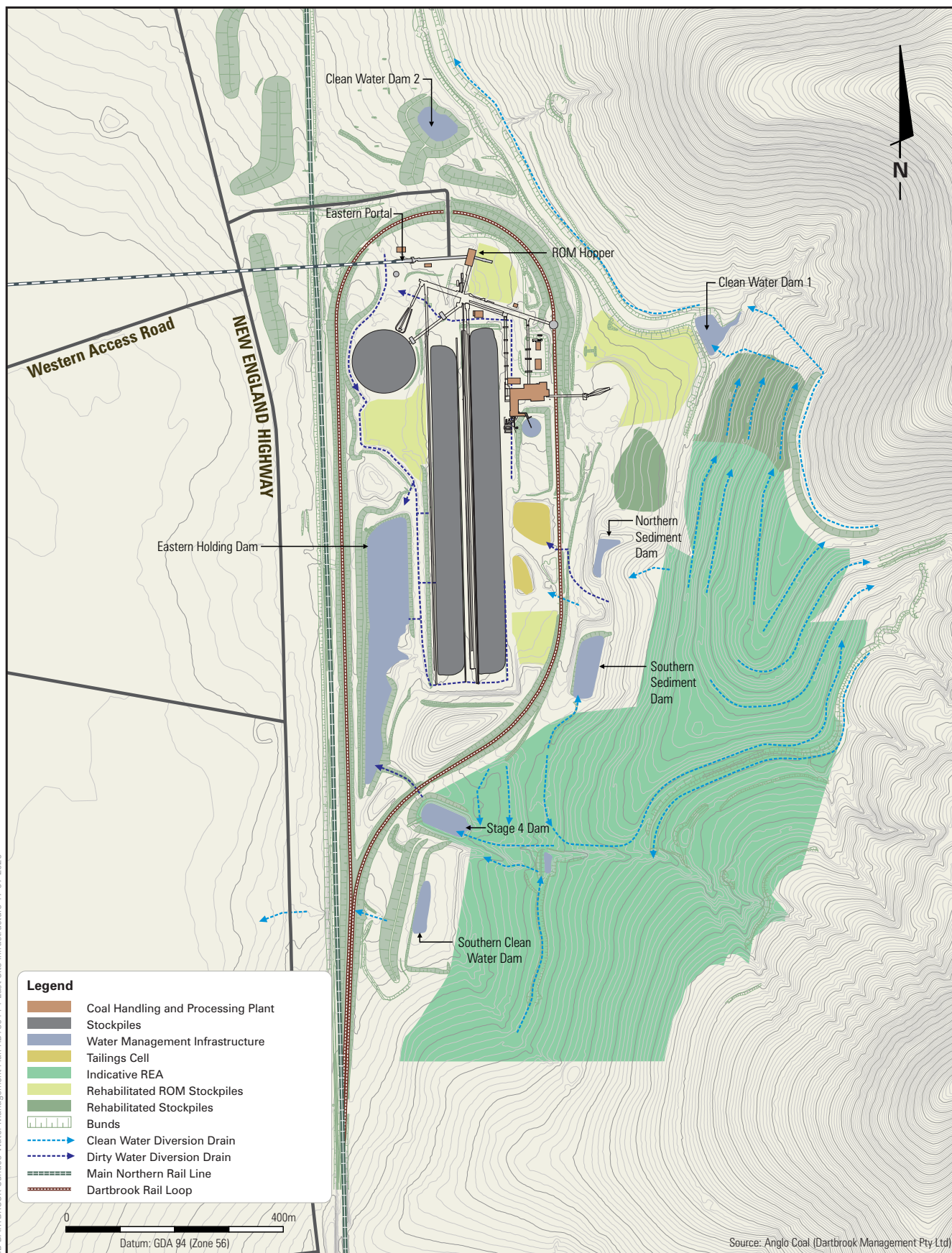


JBA 2188 DAR - F 01 SITE LOCALITY (14/03/2022)

DARTBROOK MINE

Regional Locality

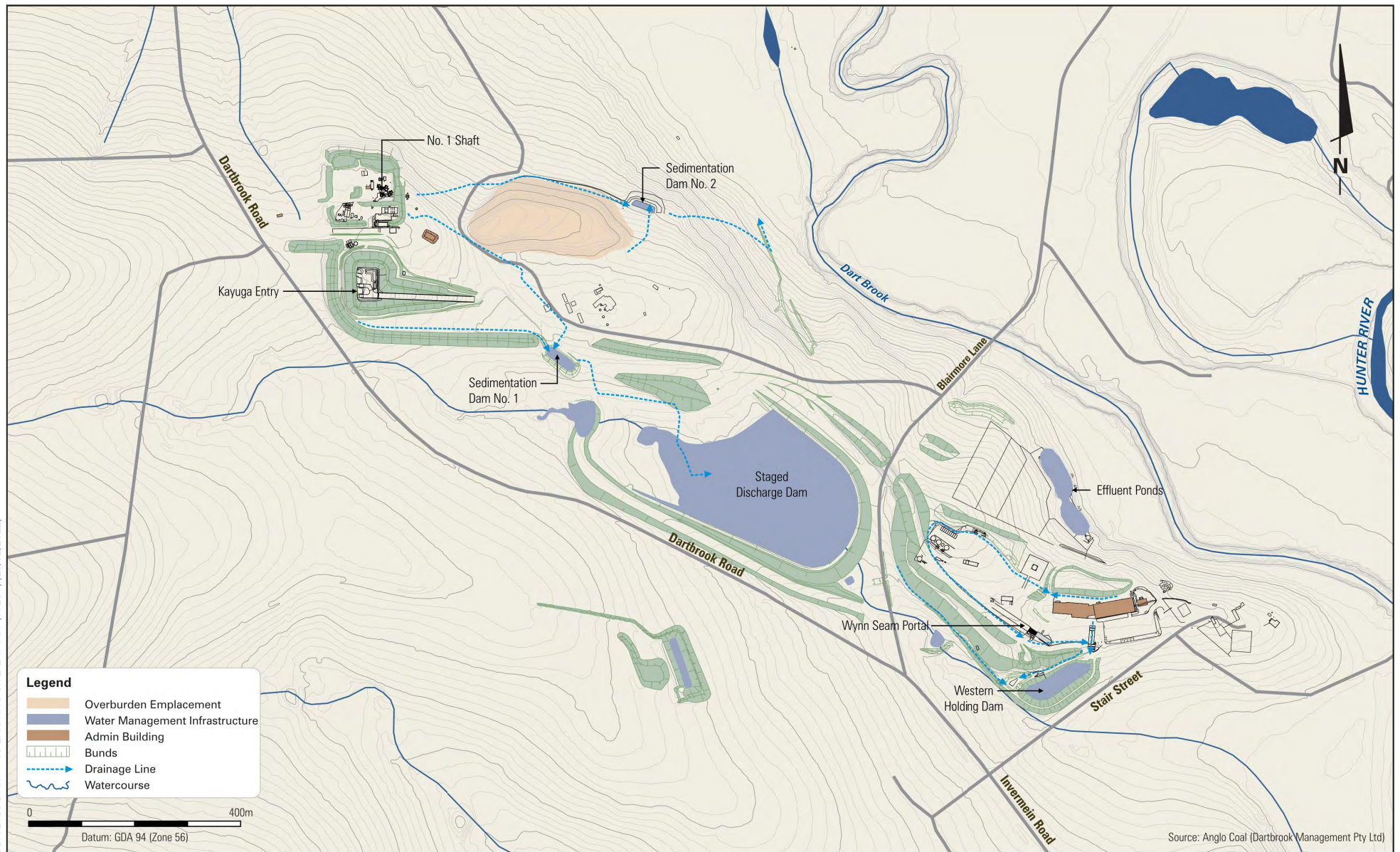
FIGURE 1



DARTBROOK MINE

Dartbrook Mine Layout - East Site

FIGURE 2



DARTBROOK MINE

Dartbrook Mine Layout - West Site

FIGURE 3

1.3 PURPOSE

The ACHMP documents the management strategies designed to protect the archaeological and heritage values of areas that may be affected by mining operations. The primary objectives of the plan are to protect known Aboriginal sites and heritage items and specify procedures to be implemented in the event that new sites or heritage items are discovered during and following recommencement of operations. These objectives will be met through the implementation of the management strategies specified in **Sections 2.2** and **3.2**.

1.4 MANAGEMENT PLAN REQUIREMENTS

The specific requirements of the ACHMP are contained in Condition 3.4 (a) of DA 231-07-2000. These requirements are listed in **Table 1** with a reference to where each specific requirement is addressed in this ACHMP.

Table 1 Management Plan Requirements

Development Consent Condition	Status / Section of Document
3.4 Heritage Assessment, Management and Monitoring	
<u>Assessment and Management</u> The Applicant must prior to the recommencement of construction or Mining Operations:	
(a) prepare an Archaeology and Cultural Heritage Management Plan to address Aboriginal and European cultural heritage issues. The Plan must be prepared in consultation with local Aboriginal stakeholders including the Upper Hunter Wonnarua Tribal Council, Wannaruah Local Aboriginal Land Council and DPIE Environment in accordance with the <i>Aboriginal Cultural Heritage Consultation Requirements for proponents</i> (2010), and to the satisfaction of the Secretary. The Plan must include but not be limited to:	This Plan This document was originally prepared in consultation with UHWTC, WLALC, and NPWS, and will be submitted to DPE prior to recommissioning and the recommencement of mining.
(i) provision of management strategies for known Aboriginal heritage sites for all parts of the DA area not affected by mining, including protecting extant sites MAC 15 and KAY 4;	Section 2
(ii) identification of any future salvage, excavation and monitoring programs for any known heritage/archaeological sites within the DA area, prior to and during construction;	There are no future salvage or excavation programmes proposed. Monitoring programmes for known sites are described in Section 2.2
(iii) set out management procedures and protocols for issues relating to Aboriginal heritage for all stages of the development (induction of employees on archaeological and heritage issues; training of field crews, Aboriginal stakeholders participation; staging of works; salvage etc);	Section 2.2
(iv) details of a program for salvaging known Aboriginal sites;	There is no salvage of known sites proposed for the recommissioning or recommencement of mining.
(iv1) an unanticipated finds protocol to manage the discovery of any unrecorded Aboriginal heritage sites;	Section 4.2

Development Consent Condition		Status / Section of Document
(v)	details of consultation undertaken with Aboriginal stakeholders in the preparation of this Plan;	Section 1.6 and Appendix A
(vi)	details of the measures to fully document, in accordance with the NSW Heritage Council guidelines, any non-indigenous heritage sites that will be required to be removed as a result of the development;	No non-indigenous sites will be disturbed during recommissioning or recommencement of mining.
(vii)	details of proposed monitoring that will be undertaken in the areas adjacent to the non-indigenous heritage sites identified within the DA area during their excavation and removal, to identify any further cultural material that may exist;	No non-indigenous sites will be disturbed during recommissioning or recommencement of mining.
(viii)	details of the methods to dispose of the excavated non-indigenous heritage sites in a manner approved by the NSW Heritage Council, and following consultation with MSC and the Muswellbrook and Upper Hunter Historical Society;	No non-indigenous sites will be disturbed during recommissioning or recommencement of mining.
(ix)	details of how public access to the Kayuga Cemetery must be maintained at all times; and	Section 3.2
(x)	details of the measures to mitigate any potential impacts resulting from the mine on the heritage homesteads: Old Kayuga, New Kayuga, Riverview, the McIntyre family cemetery, Kayuga Cemetery and the Kayuga Estate and details of any maintenance procedures proposed to preserve their heritage value in accordance with the NSW Heritage Council requirements.	Section 3.2
(b)	Within six months of the commencement of construction or Mining Operations, the Applicant must make a \$50,000 contribution towards the establishment of a trust fund set up by the Department of Urban Affairs and Planning through the Public Trustee. The funds are to be used for a regional study of Aboriginal sites and other cultural heritage projects as defined by the Trust Deed.	This requirement was fulfilled by ACDM (as evidenced in ACDM letter dated 4/12/07)
(c)	If, during the course of construction of any surface facilities or mining activities, the Applicant becomes aware of any heritage or archaeological sites not previously identified, all work likely to affect the site must cease immediately and the relevant authorities consulted about an appropriate course of action prior to recommencement of work. The relevant authorities may include OEH, the NSW Heritage Office, the Upper Hunter Wonnarua Tribal Council and Wannaruah Local Aboriginal Land Council. Any necessary permits or consents must be obtained and complied with prior to recommencement of work.	Section 4.2
(d)	The Applicant is to consult regularly with Aboriginal stakeholders. The results of these consultations must be documented in the Annual Review.	Section 1.6
(e)	Any proposed works that will affect non-indigenous heritage items, (including the items listed in Section 3.9.2 of the EIS) including demolition of the items, will require an approval under section 139 of the <i>Heritage Act 1977</i> and an application for an excavation permit under section 140 of the <i>Heritage Act 1977</i> to	No impacts to non-indigenous items are expected during recommissioning or following recommencement of mining.

Development Consent Condition	Status / Section of Document
disturb the relics will be required. This may also require additional approvals from MSC if the items are listed on the Heritage Schedule of the Local Environmental Plan.	
Monitoring (g) The Applicant must monitor the effectiveness of the measures outlined in the Archaeology and Cultural Heritage Management Plan [Condition 3.4(a)]. A summary of monitoring results must be included in the Annual Review.	Section 5
(h) The Applicant must prepare a monitoring program of known indigenous heritage sites identified within the DA area, during the period of construction and mining operations. The monitoring program must be included in the Archaeology and Cultural Heritage Management Plan (Condition 3.4 (a)) and a summary of results will be included in the Annual Review. The program must: <ul style="list-style-type: none"> (i) monitor all known archaeological sites 12 months after undermining for the effects of subsidence and report on the results of these inspections in the Archaeology and Cultural Heritage Management Plan; (ii) monitor the construction of sediment and erosion control works to identify new archaeology sites; (iii) monitor locations in the subsidence area in order to assess the impacts of subsidence on the land surface, in areas that the Applicant has identified as being potentially affected by the following processes: <ul style="list-style-type: none"> • erosion; • rilling; • knickpoint initiation; and • areas prone to pooling. 	Section 5
Note: <ul style="list-style-type: none"> • <i>No Aboriginal archaeological sites, that have been identified, shall be destroyed without the approval of the Secretary of DPIE Environment, under section 90 of the National Parks and Wildlife Act 1974, prior to any disturbance of the identified sites by Construction or Mining Operations.</i> 	Section 4.2

1.5 REGULATORY FRAMEWORK

1.5.1 National Parks and Wildlife Act

The *National Parks and Wildlife Act 1974* (NPW Act) provides for the protection of Aboriginal heritage items in NSW. Section 86 of the NPW Act states that it is an offence to harm Aboriginal objects except where authorised by an Aboriginal Heritage Impact Permit (AHIP) granted under Section 90 of the NPW Act. ACDM previously obtained Section 90 permits to authorise the salvage of Aboriginal artefacts located at the West Site.

1.5.2 Heritage Act

The *Heritage Act 1999* (Heritage Act) governs the management of non-indigenous heritage values in NSW. Section 139 of the Heritage Act provides that an excavation permit is required for any disturbance or excavation that may impact upon a 'relic'. The term 'relic' is defined under Section 4 of the Heritage Act as:

'any deposit, artefact, object or material evidence that:

- (a) Relates to the settlement of the area that comprises New South Wales, not being Aboriginal settlement, and*
- (b) Is of State or local heritage significance'.*

There are four heritage items located within the Dartbrook mining authorities that are listed under the *Muswellbrook Local Environment Plan 2009* (Muswellbrook LEP). Recommissioning and recommencement of operations are not expected to disturb these relics. Accordingly, no excavation permits under the Heritage Act are required.

1.6 STAKEHOLDER CONSULTATION

Condition 3.4 (a) of the Development Consent states that the ACHMP must be prepared in consultation with local Aboriginal stakeholders including the Upper Hunter Wonnarua Tribal Council (UHWTC), Wanaruah Local Aboriginal Land Council (WLALC) and the Department of Planning and Environment – Environment and Heritage. The UHWTC is no longer an active organisation.

A draft of the ACHMP was distributed to the WLALC and the MOD7 Registered Aboriginal Parties (RAPs), for review on 30 May 2022. Comments received from these stakeholders are reproduced in **Appendix A**.

The draft ACHMP was provided to Heritage NSW for comment on 14 November 2022. Heritage NSW raised no concerns in relation to the ACHMP or the proposed management measures for MOD7. The response from Heritage NSW is reproduced in **Appendix A**.

2. ABORIGINAL CULTURAL HERITAGE

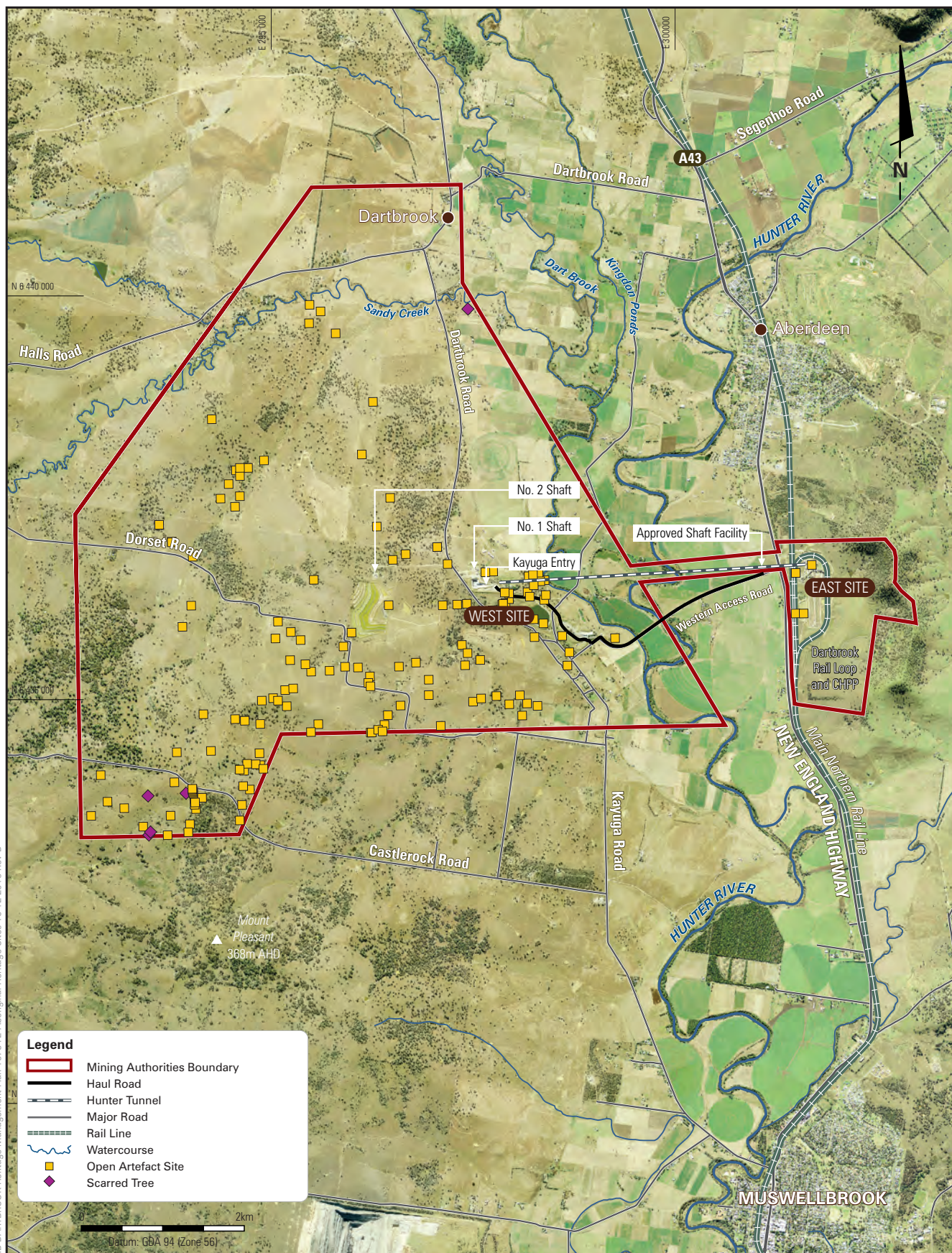
2.1 ARCHAEOLOGICAL SITE IDENTIFICATION AND ASSESSMENT

A detailed Archaeological Assessment of Dartbrook Mine was conducted by HLA-Envirosciences as part of the *Dartbrook Extended Environmental Impact Statement* (HLA, 2000) (EIS). The archaeological surveys undertaken for the EIS were conducted with representatives of the Wonnarua Tribal Council. Additional archaeology surveys of small additional areas within and surrounding the West Site surface Facilities were completed in 2001 and 2002. These surveys were completed by archaeologists from HLA-Envirosciences and Southeast Archaeology, and representatives of the UHWTC. Archaeological surveys have been completed for all areas at Dartbrook Mine that have been subject to surface disturbance.

An Aboriginal Heritage survey was conducted in 2007 for MOD7. The site for the initially proposed shaft near the New England Highway was surveyed in 2017 by an archaeologist from AECOM Australia, with assistance from registered Aboriginal parties. No Aboriginal items were identified at the shaft site. The proposed shaft was not approved under MOD7 and hence there will be no disturbance or construction proposed at this site.

Appendix B contains a complete list of the 158 known Aboriginal sites that are extant within the Dartbrook mining authorities. The locations of these known sites are shown in **Figure 4**. The site list in **Appendix B** also provides detail about the nature and significance of sites.

The EIS assessment concluded that the large majority of sites are of low to very low significance, with four sites of moderate significance. The large majority of sites are artefact scatters and isolated finds (located mainly adjacent to creek lines or along the ridge crests), and open campsites (which consist of scatters of stone artefacts). There are five scarred trees located within the Dartbrook mining authorities, none of which will be impacted by Dartbrook's activities.



DARTBROOK MINE

Aboriginal Heritage Sites

FIGURE 4

2.2 MANAGEMENT STRATEGIES

This section describes the proposed management strategies for known Aboriginal heritage sites that may have been impacted by activities at Dartbrook Mine. The areas where sites may have been impacted include:

- Surface facilities;
- Rejects Emplacement Area (REA);
- Surface areas affected by mining subsidence; and
- Ventilation shafts and other minor surface infrastructure areas.

Impacts associated with these activities have already materialised and the necessary management measures have been implemented.

No further surface disturbance is expected to be carried out during recommencement of operations other than the recommissioning of the already approved REA. In the unlikely event that it is required, any new disturbance will be subject to the assessment process for a Ground Disturbance Permit (GDP). The GDP process involves identification of environmental constraints (including heritage items) at the site of the proposed disturbance and recommendation of avoidance and mitigation measures.

Given that recommencement of operations are not expected to result in further impacts to Aboriginal items, no actions are required other than maintaining the existing protections.

All personnel at Dartbrook Mine receive heritage awareness training as part of their site induction. Heritage awareness training includes information about the types of Aboriginal sites that may occur at the site, locations of known sites and the procedure to be followed in the event that heritage items are discovered. If any previously unidentified sites are encountered during care and maintenance activities, the unanticipated finds protocol (discussed in **Section 4.1**) will be implemented.

2.2.1 Surface Facilities

Six Aboriginal sites (Site No. 50, 143, 144, 145, 153 and 154) were located very close to haul roads, access roads and other mine infrastructure (see **Figure 5**).

The sites comprised isolated finds (Site No. 50 and 154), open artefact scatters (Site No. 143, 144 and 145) and an artefact scatter (Site No. 153). All of these sites were of low or very low significance. ACDM obtained Permits under Section 90 of the *National Parks and Wildlife Act 1974* (NPW Act) to authorise the salvage of these sites.

It was envisaged that sites 50 (MAC 15) and 153 (Kay4) would be disturbed by construction of the unsealed haul road at the West Site. Although Section 90 Permits were obtained to enable the salvage of these sites, the haul road ultimately avoided these sites. A fenced enclosure is in place to protect sites 50 and 153.

Fenced and signposted enclosures have also been established for other Aboriginal sites near the West Site that were not disturbed during previous construction and operations (see **Figure 5**). All fenced enclosures will be maintained in good condition.

A fenced and signposted archaeology buffer zone was established in the vicinity of the un-named creek upstream of the Staged Discharge Dam (see **Figure 5**). The buffer zone was established to prevent disturbance of an area potentially containing archaeological material in accordance with a recommendation of the EIS. The fenced and signposted buffer zone will remain in place during care and maintenance. Should any activities need to be undertaken within this buffer zone, further survey work will be conducted and the necessary Section 90 Permits will be obtained.

All other known sites within the vicinity of the West Site surface facilities are located away from mining activities and are not at risk of impact.

Recommencement of mining activities will not result in any impacts additional to those that occurred during previous operations. Therefore, no additional mitigation or monitoring measures are required other than the maintenance of the existing fencing and signposting.

2.2.2 Rejects Emplacement Area

There are no extant sites located within the REA. There was previously one identified Aboriginal site (Site No. 87) within the footprint of the REA (see **Figure 4**). The site was an isolated artefact made from silcrete, with no associated archaeological deposits. The site was of poor integrity and low significance. Site No. 87 was salvaged by ACDM in accordance with a Permit under Section 90 of the NPW Act.

Should any additional sites be discovered during recommencement of emplacement of reject waste within the REA, the procedure described in **Section 4.1** will be applied.

2.2.3 Surface Areas Affected by Subsidence

Longwall mining operations were undertaken from 1996 to 2006. Subsidence of the land overlaying longwall panels occurred progressively during this period. The locations of known Aboriginal sites overlying the underground mine workings are shown in **Figure 4**. The majority of these sites are located on privately owned land. The Aboriginal sites in this area are predominantly isolated finds, open artefact scatters and open campsites of low significance.

The types of Aboriginal sites overlying the mine workings (i.e. stone artefacts) are generally not susceptible to damage from surface subsidence. However, there are some areas where surface subsidence (if not remediated) may cause erosion (including rilling and knick point initiation) or pooling, which could potentially affect Aboriginal sites. Monitoring of all Aboriginal sites in areas affected by mining subsidence was conducted 12 months after being mined beneath, as required under Condition 3.4(h) of the Development Consent. Where required, remedial surface drainage works were completed to ensure that known sites were not affected by erosion or pooling resulting from mining subsidence. Remediation works located on private land were conducted with the consent of the landowner. Monitoring of remedial drainage or sediment and erosion control works was conducted in accordance with Condition 3.4(h)(ii) of the Development Consent.

Given that longwall mining has not been undertaken since 2006, all subsidence associated with previous mining would have already materialised. It is anticipated that there will be no subsidence effects associated with the commencement of Bord and Pillar mining as such no further impacts to known Aboriginal sites are predicted following the recommencement of operations. Accordingly, no further management or monitoring measures are required for the sites overlying the proposed mine workings to facilitate bord and pillar mining.

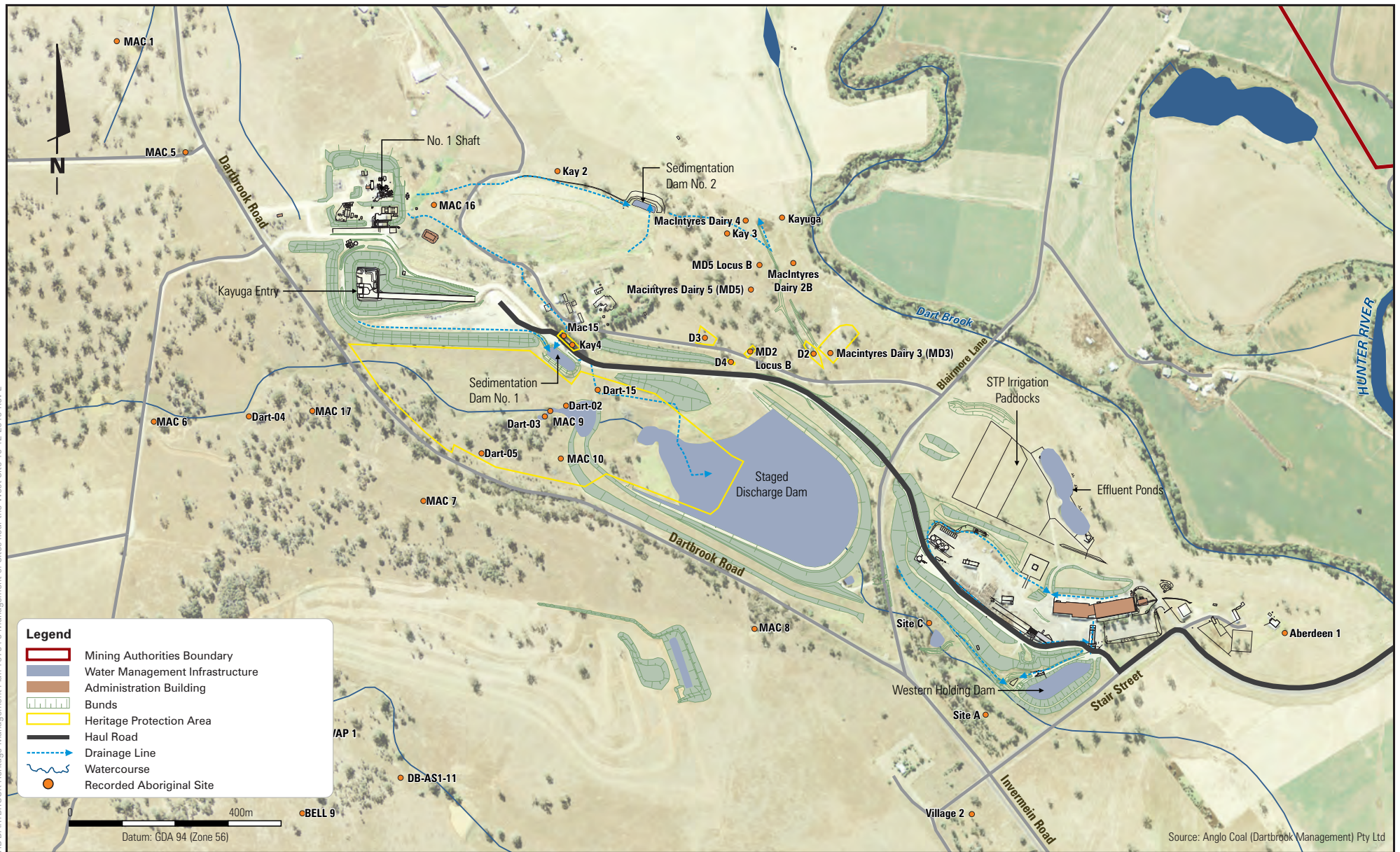
2.2.4 Ventilation Shafts and Other Minor Surface Infrastructure Areas

Two ventilation shafts were constructed during previous mining operations. Each shaft has a relatively small surface footprint of approximately 15m x 15m. Other minor surface infrastructure, such as gas drainage pipelines, mine dewatering boreholes and dropholes were also constructed. The ventilation shafts and other minor surface infrastructure were sited to avoid disturbance of known Aboriginal sites. No additional surface infrastructure will be constructed following the recommencement of mining.

2.2.5 Unaffected Areas

The land in the western extent of the Dartbrook mining authorities has not been impacted by surface disturbance or subsidence associated with Dartbrook Mine. The known Aboriginal sites in these unaffected areas will be conserved in situ.

There is an area near the south-western extent of the Dartbrook mining authorities that also falls within Mining Lease (ML) 1645 held by MACH Energy Australia Pty Limited (MACH Energy), the owner of the neighbouring Mount Pleasant Mine. MACH Energy has obtained AHIPs to facilitate the salvage of certain Aboriginal sites within ML 1645 (as indicated in **Appendix B**).



DARTBROOK MINE

Management of Aboriginal Heritage Sites - West Site

FIGURE 5

3. NON-INDIGENOUS HERITAGE

3.1 HERITAGE SITES

A detailed non-indigenous heritage assessment was included as Appendix J of the EIS. **Table 2** lists the items of heritage interest located near the West Site. Four of these items are listed under the Muswellbrook LEP as having heritage significance. The other items are of heritage interest but do not meet any criteria for heritage significance.

Table 2 Listed Heritage Items

Item Name	Heritage Register	Significance
Old Kayuga Cemetery	Muswellbrook LEP	State
Kayuga Homestead (c. 1932)	Muswellbrook LEP	Local
Riverview Homestead	Muswellbrook LEP	Local
Rosedale Cottage (also known as Rosevale Cottage)	Muswellbrook LEP	Local
Kayuga Estate	N/A	N/A
Kayuga Homestead (c. 1830)	N/A	N/A
Macintyre Family Cemetery	N/A	N/A
Macintyre Gateposts	N/A	N/A

The locations of these items are shown on **Figure 6**. All of these sites are located on land owned by Trepang Services Pty Ltd. There are other listed heritage items in the vicinity of Dartbrook Mine but not in areas where mining activities will be undertaken. Such sites have not been considered further in this ACHMP as they will not be affected by mining activities.

The 1830 Kayuga Homestead (also known as the Old Kayuga Homestead) has been 'modernised' over time and is currently occupied by Trepang Services related staff.

The Kayuga Estate was the original Macintyre family land holding. The estate consists predominantly of grazing land and contains both the 1830 and 1932 Kayuga Homesteads. The estate is now owned by Trepang Service Pty Ltd and contains the West Site surface facilities. Parts of the property overlie the previous underground mining area at Dartbrook Mine.

3.2 MANAGEMENT STRATEGIES

The 1932 Kayuga Homestead and its curtilage, and the Macintyre Family Cemetery have been fenced and signposted to prevent unauthorised access. These areas will remain fenced once mining recommences.

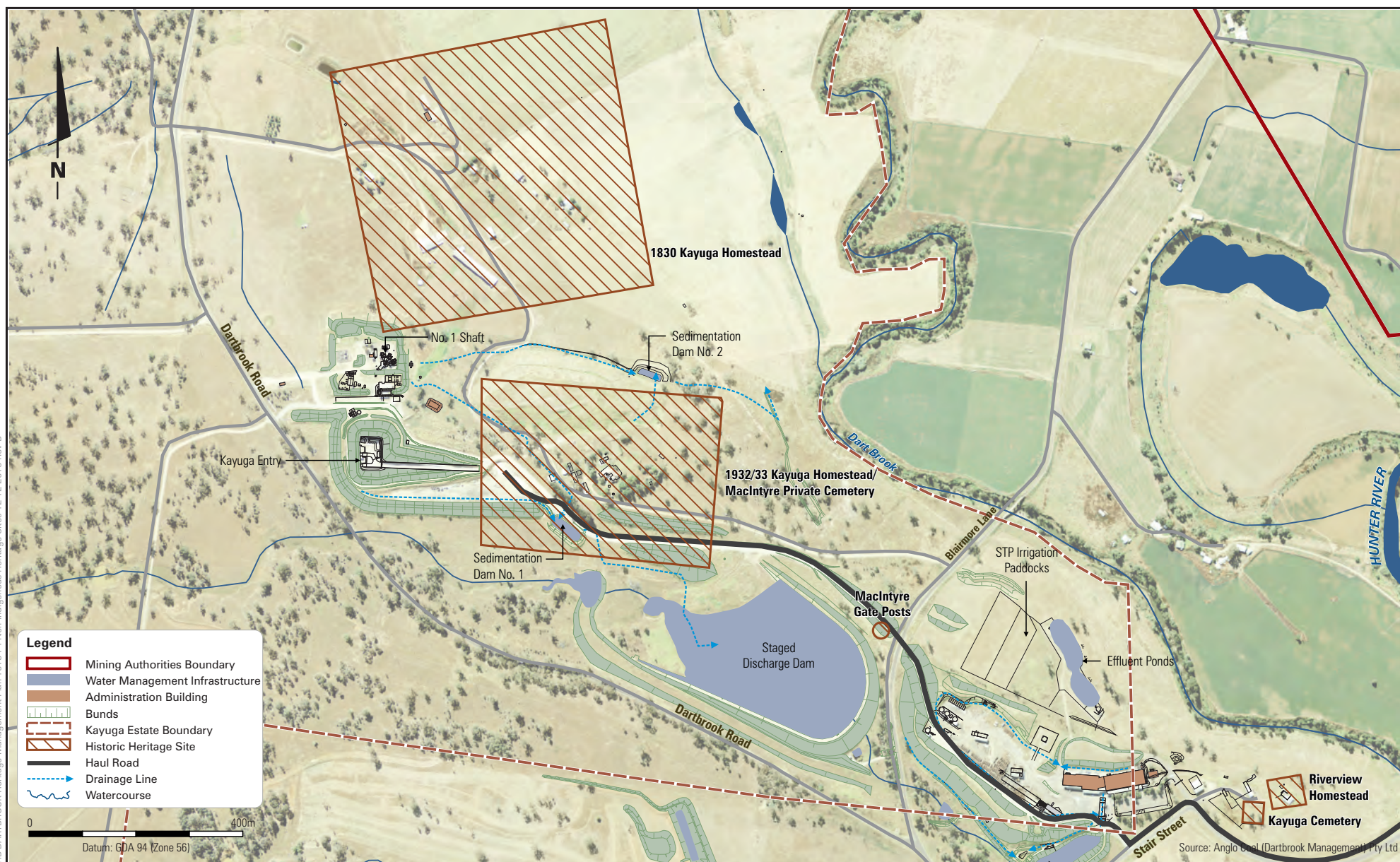
The Old Kayuga Cemetery will be accessible to the public during operations, provided that notice is given to Tetra. The Macintyre Gateposts will not be disturbed and do not require any mitigation or management measures.

The Riverview Homestead has not been impacted by previous mining operations, although the building was previously used by ACDM as an administration office. The Riverview Homestead will not be occupied during operations.

The impact of mining subsidence on land within the original Kayuga Estate was managed in accordance with approved Mining Operations Plans. Subsidence impact on the parts of the estate that are privately owned were managed in accordance with Property Subsidence Management Plans prepared in consultation with the landowner and approved by the then Department of Mineral Resources. No further subsidence impacts are expected to occur during bord and pillar operations. As such, no specific management measures are required for historic sites other than slashing of grass and routine building maintenance to rectify normal wear and tear.

In accordance with Condition 3.4(f) of the Development Consent, ACDM previously engaged an appropriately qualified person to prepare an oral history of the mining lease area prior to dispersal. A copy of this report can be made available upon request.

If any unanticipated finds are encountered operations, the protocol in **Section 4.1** will be applied.



DARTBROOK MINE

Non Indigenous Heritage Sites

FIGURE 6

4. CONTINGENCY PLAN

4.1 UNANTICIPATED IMPACTS

No impacts to known heritage items are expected to occur during operations as minimal surface disturbance is expected to occur following the recommencement of mining. In the unlikely event that it is required, any new disturbance will be subject to the assessment process for a Ground Disturbance Permit (GDP). The GDP process involves identification of environmental constraints (including heritage items) at the site of the proposed disturbance and recommendation of avoidance and mitigation measures. This includes checking the location of planned disturbance against a database of the known Aboriginal site locations, to ensure that potential impacts are avoided.

If any proposed activities have the potential to cause impacts to previously identified heritage items, the mitigation measures for that site (as specified in **Appendix B**) will be implemented. Further, if any impacts to heritage items are identified, Dartbrook personnel will conduct an investigation to determine the cause of such impacts. If required, remediation measures will be developed in consultation with the relevant stakeholders (which may include DPE – Environment and Heritage, Heritage NSW and relevant Aboriginal parties).

4.2 UNANTICIPATED FINDS

An unanticipated find is a heritage item that was not identified during previous archaeological surveys. In the event of an Aboriginal item being encountered, the following unanticipated finds protocol will be implemented:

1. Immediately suspend any work that could disturb or damage the item;
2. Notify DPE – Environment and Heritage and WLALC of the discovery;
3. Engage an archaeologist and representatives of WLALC to conduct an inspection of the item to determine its nature, extent and heritage significance;
4. If impacts to the site cannot be avoided, obtain the relevant permits under the NPW Act. If required, salvage works will be conducted in consultation with WLALC and other Aboriginal parties; and
5. Prepare an AHIMS card for the item.

In the event of a non-indigenous item being encountered, the following unanticipated finds protocol will be implemented:

1. Immediately suspend any work that could disturb or damage the item;
2. Notify DPE- Environment and Heritage, Muswellbrook Shire Council (MSC) and Muswellbrook Historical Society of the discovery;
3. Engage a suitably qualified archaeologist to conduct an inspection of the item to determine its heritage value; and
4. If the item is deemed to have heritage values and impacts to the site cannot be avoided, obtain the relevant permits under Section 139 of the Heritage Act.

The following unanticipated finds protocol will be implemented in the unlikely event that human remains are encountered:

1. Immediately suspend work in the vicinity of the human remains;
2. Notify the NSW Police of the discovery;

3. If the Police suspect that the remains are of Aboriginal origin, engage a forensic anthropologist to examine the remains;
4. If the remains are determined to be of pre-contact Aboriginal origin, develop a plan of action in consultation with DPE – Environment and Heritage and Registered Aboriginal Parties; and
5. If the remains are of non-indigenous origin, secure the site and notify DPE – Environment and Heritage of the discovery.

If the remains are determined to be modern, the NSW Police will manage the site as a crime scene. If the remains are not of human origin, work may recommence.

5. MONITORING AND REPORTING

5.1 MONITORING

Condition 3.4(g) of the Development Consent requires monitoring of the effectiveness of heritage management measures. Monitoring will involve visual inspections of the fenced enclosures around Aboriginal sites. The condition of non-indigenous items will also be monitored through visual inspections. A summary of the monitoring results will be included in the Annual Review.

In accordance with Condition 3.4(h) of the Development Consent, monitoring of all known indigenous heritage sites identified within the DA area will be undertaken. This will include monitoring:

1. All known archaeological sites 12 months after undermining for the effects of subsidence and report on the results of these inspections in the Archaeology and Cultural Heritage Management Plan;
2. The construction of sediment and erosion control works to identify new archaeology sites; and
3. Locations in any subsidence areas in order to assess the impacts of subsidence on the land surface, in areas that have been identified as being potentially affected by the following processes:
 - Erosion;
 - Rilling;
 - Knickpoint initiation; and
 - Areas prone to pooling.

A summary of monitoring results will be reported in the Annual Review.

5.2 REPORTING

Condition 9.2 of the Development Consent requires the preparation of an Annual Review. The Annual Review will report on the heritage management measures and monitoring outcomes from the previous year. In accordance with Condition 3.4(d) of the Development Consent, consultation with Aboriginal stakeholders will also be outlined in the Annual Review. Copies of the Annual Review will be distributed to DPE, MSC, Upper Hunter Shire Council and the Community Consultative Committee, in accordance with Condition 9.2(b) of the Development Consent.

In the event that an incident occurs, Dartbrook will immediately notify DPE and other relevant authorities of the incident in accordance with Condition 9.3(a) of the Development Consent. An 'incident' is defined as:

"an occurrence or set of circumstances that causes or threatens to cause material harm and which may or may not be or cause a non-compliance."

In the event that a non-compliance occurs, Dartbrook will notify DPE in accordance with Condition 9.3(b) of the Development Consent.

6. RESPONSIBILITIES

Table 3 identifies the persons that are responsible for implementing the management measures in this ACHMP. These responsibilities may be delegated, as required.

Table 3 Management Responsibilities

No	Activity	Responsibility	Timing
1.	Ensure adequate resourcing is available for the monitoring and management measures outlined in this ACHMP	TMR Operations	Ongoing
2.	Ensure that all relevant personnel and contractors are provided with appropriate training	TMR Operations	Ongoing
3.	Facilitate consultation with regulators and Aboriginal parties (as needed)	Environment Officer	Ongoing
4.	Maintenance and inspections of existing heritage management measures (e.g. fenced enclosures)	Environment Officer	Annual or as required
5.	Review applications for GDPs	Environment Officer	As required
6.	Conduct investigations and/or implement contingency measures in accordance with Section 4.	Environment Officer	As required
7.	Conduct reporting in accordance with Section 5.2	Environment Officer	Annual
8.	Review the content of this ACHMP in accordance with Section 7.	Environment Officer	As required

7. REVIEW REQUIREMENTS

Condition 3.2(f)(viii) of the Development Consent requires that all management plans include a protocol for periodic review of the plan. Further to this, Condition 3.2 (k) requires:

....the suitability of existing strategies, plans and programs must be reviewed within three months of:

- (i) The notification of an incident under Condition 9.3 (a);*
- (ii) The submission of an Annual Review under Condition 9.2 (a);*
- (iii) The submission of an Independent Environmental Audit (IEA) under Condition 8.1 (a); or*
- (iv) The approval of any modification of the conditions of this consent (unless the condition specifies otherwise), the suitability of existing strategies, plans and programs required under this consent must be reviewed by the Applicant.*

Condition 3.2 (l) of the Development Consent, also states:

....if necessary, to either improve the environmental performance of the development, cater for a modification or comply with a direction, the strategies, plans and programs required under this consent must be revised, to the satisfaction of the Secretary. Where revisions are required, the revised document must be submitted to the Secretary for approval within six weeks of the completion of the review on Condition 3.2 (j).

This is to ensure strategies, plans and programs are updated on a regular basis and to incorporate any recommended measures to improve the environmental performance of the development.

This ACHMP will be reviewed (and revised if necessary) as per above and/or prior to any changes in mining.

8. REFERENCES

- Department of Environment, Climate Change and Water (DECCW), *Aboriginal Cultural Heritage Consultation Requirements for Proponents*.
- Hansen Bailey (2018). *Environmental Assessment, Modification 7, Kayuga Seam Bord and Pillar Mining Operations*.
- Hansen Bailey (2021). *Modification 7 Updated Response to Contentions*.
- HLA-Envirosciences (2000). *Dartbrook Extended Environmental Impact Statement*.

9. ABBREVIATIONS

Abbreviation	Meaning
ACDM	Anglo Coal (Dartbrook Management) Pty Ltd
ACHMP	Archaeology and Cultural Heritage Management Plan
Aboriginal Consultation Guidelines	'Aboriginal Cultural Heritage Consultation Requirements for Proponents 2010' (DECCW, 2010)
ACHAR	Aboriginal Cultural Heritage Assessment Report
AHD	Australian Height Datum
AHIP	Aboriginal Heritage Impact Permit
AHIMS	Aboriginal Heritage Information Management System
ARTC	Australian Rail Track Corporation
AQC	Australian Pacific Coal Ltd
CCC	Community Consultative Committee
CHPP	Coal Handling and Preparation Plant
DA	Development Application
DAWE	Commonwealth Department of Agriculture, Water and the Environment
DPE	Department of Planning & Environment
DPE – Environment and Heritage	Department of Planning and Environment – Environment and Heritage Group
EIS	Environmental Impact Statement
EP&A Act	<i>Environmental Planning & Assessment Act 1979</i>
EP&A Regulation	<i>Environmental Planning & Assessment Regulations 2021</i> (repealed EP&A Regulation 2000 on 1 March 2022)
EPA Savings Regulation	<i>Environmental Planning and Assessment (Savings, Transitional and Other Provisions) Regulation 2017</i>
EPBC Act	Commonwealth <i>Environment Protection & Biodiversity Conservation Act 1999</i>
EPI	Environmental Planning Instrument
EPL	Environment Protection Licence
GHG	Greenhouse Gas
GDP	Ground Disturbance Permit
GIS	Geographic Information System
GPS	Geographical Positioning System
ha	Hectare
Heritage Act	<i>Heritage Act 1977</i>
IPCN	Independent Planning Commission NSW

Abbreviation	Meaning
LEP	Local Environmental Plan
LGA	Local Government Area
M	metres
MAP	Management Action Plan
Mbcm	Million bank cubic metres
Mining Act	<i>Mining Act 1992</i>
Mining SEPP	<i>State Environmental Planning Policy (Mining, Petroleum Production and Extractive Industries) 2007</i>
Mtpa	Million tonnes per annum
MSC	Muswellbrook Shire Council
NP&W Act	<i>National Parks and Wildlife Act 1974</i>
NT Act	<i>Commonwealth Native Title Act 1993</i>
RAPs	Registered Aboriginal Parties
REA	Rejects Emplacement Area
RMS	Roads and Maritime Services
SEE	Statement of Environmental Effects, now called a Modification Report for State Significant Development Modification Applications.
SEPPs	State Environmental Planning Policies
SSD	State Significant Development
Tetra	Tetra Resources Pty Ltd
Trepang	Trepang Services Pty Ltd
UHWTC	Upper Hunter Wonnarua Tribal Council
WLALC	Wanaruah Local Aboriginal Land Council
WM Act	<i>Water Management Act 2000</i>

APPENDIX A

STAKEHOLDER CONSULTATION

Jeff Beatty
General Manager
AQC Dartbrook Management Pty Ltd
6 Stair Street
Kayuga NSW 2333

25/01/2023

Subject: Approval of Archaeology and Cultural Heritage Management Plan

Dear Mr Beatty

I refer to the Dartbrook Archaeology and Cultural Heritage Management Plan (ACHMP) (Version 9, dated October 2022), which has been prepared in accordance with condition 3.4 of DA231-07-2000.

The Department has carefully reviewed the ACHMP and is satisfied that it addresses the relevant requirements of the development consent.

Accordingly, the Planning Secretary has approved the ACHMP (Version 9, dated October 2022).

You are reminded that if there are any inconsistencies between the ACHMP and the conditions of approval, the conditions prevail.

Please ensure you make the document publicly available on the project website at the earliest convenience.

If you wish to discuss the matter further, please contact Joe Fittell on 02 4908 6896.

Yours sincerely

A handwritten signature in black ink, appearing to be "SO", written over a light grey circular stamp.

Stephen O'Donoghue
Director
Resource Assessments
As nominee of the Planning Secretary

Table A-1 Dartbrook MOD7 Registered Aboriginal Parties

Organisation / Individual	Contact
Wanaruah Local Aboriginal Land Council	Noel Downs
Culturally Aware	Tracey Skene
Hunter Valley Aboriginal Corporation	Ross Pahuru
Wonn 1 Contracting	Arthur Fletcher
Tocomwall Pty Ltd	Scott Franks
Didge Ngunawal Clan	Paul Boyd
Aboriginal Native Title Elders Consultants	Margaret Matthews
Upper Hunter Heritage Consultants	Melissa & Darryl Matthews
Divine Diggers Aboriginal Cultural Consultants	Deidre Perkins
Ungooroo Aboriginal Corporation	Allen Paget
Stephen Talbott	Stephen Talbott
Mindaribba Local Aboriginal Land Council	Tara Dever
Jarban + Mugrebea	Les Atkinson
Lower Hunter Aboriginal Incorporated	David Ahoy
Lower Hunter Wonnarua Cultural Services	Lea-Anne Ball and Tom Miller
Amanda Hickey Cultural Services	Amanda Hickey
A1 Indigenous Services	Carolyn Hickey
Yinarr Cultural Services	Kathleen Steward Kinchela
Murra Bidgee Mullangari Aboriginal Corporation	Ryan Johnson
Muragadi Heritage Indigenous Corporation	Jesse Carroll-Johnson

Registered Aboriginal Parties Consultation

From: Scott Franks <scott@tocomwall.com.au>

Sent: Monday, 30 May 2022 4:39 PM

To: Sonya Eather <seather@baileyassociates.com.au>; Robert Lester <carrob1@outlook.com>; David Shoebridge <david.shoebridge@parliament.nsw.gov.au>; Sue Higginson <suehigginson.greens@gmail.com>

Subject: Re: Tetra Dartbrook ACHMP Management Plan

[WARNING] This email originated from outside of the organisation.

Dear Sonya,

Tocomwall and the PCWP cannot support the Draft ACHMP.

At the recent IPC hearing it was made clear by the departments of planning representative that if the Glendale Glencore operations was approved that would result in know low lying lands left for the Wonnarua people left that would allow us to conduct any ceremonies or allow us any land left for intergenerational equity or place to conduct ceremonies or to gather cultural foods our medicinal products. That being the case we the Wonnarua people will not support this mine being approved. If the department of planning support this approval I will make an application under section 10 to ensure our lands are not lost to mining and our peoples culture can survive.

I formally request that the department of environment and the state minister for environment contact my self and Mr Robert lest to arrange a meeting to discuss this project.

Regards
Scott Franks

Consultant
Tocomwall Pty Ltd
scott@tocomwall.com.au
0404 171544

Breach of Confidentiality

This email and any files transmitted with it are confidential and intended solely for the use of the individual to whom they are addressed. If you have received this email in error please notify the sender. This message contains confidential information and is intended only for the individual named. If you are not the named addressee you should not disseminate, distribute or copy this e-mail. Please notify the sender immediately by e-mail if you have received this e-mail by mistake and delete this e-mail from your system. If you are not the intended recipient you are notified that disclosing, copying, distributing or taking any action in reliance on the contents of this information is strictly prohibited. Although the company has taken reasonable precautions to ensure no viruses are present in this email, the company cannot accept responsibility for any loss or damage arising from the use of this email or attachments.

From: Tara Dever <Ceo@mindaribbalalc.org>
Sent: Tuesday, 31 May 2022 11:12 AM
To: Sonya Eather <seather@baileyassociates.com.au>
Cc: Wanaruah Local Aboriginal Land Council <wanaruah@bigpond.net.au>
Subject: RE: Tetra Dartbrook ACHMP Management Plan

[WARNING] This email originated from outside of the organisation.

Thankyou for the attached Sonia,

I have copied the Wanaruah Local Aboriginal Land Council into this email as this project sits within their Local Aboriginal Land Council boundaries as the Gazetted Authority for Culture and Heritage across that area.

This information will be made available at the Mindaribba LALC General Meeting on the 6th June 2022 at 6pm for Local Knowledge Holders living outside of the Tetra Dartbrook ACHMP area who may wish to engage with your project.

Warm regards

Tara Dever
Chief Executive Officer
Mindaribba Local Aboriginal Land Council
PO Box 401, East Maitland, NSW 2323
Ph: 02 4015 7000



I acknowledge the Traditional Owners and Custodians of the land I work on, the Wonnarua People; and pay my respect to all Aboriginal Elders Past, Present and Emerging.

From: jesse johnson <muragadi@yahoo.com.au>
Sent: Tuesday, 7 June 2022 12:53 PM
To: Sonya Eather <seather@baileyassociates.com.au>
Subject: Re: Tetra Dartbrook ACHMP Management Plan

[WARNING] This email originated from outside of the organisation.

Hi Sonya,
I have read the project information and ACHMP for the above project, I agree with the recommendations made.
Kind regards
Jesse Johnson
0418970389

From: lilly carroll <didgengunawalclan@yahoo.com.au>
Sent: Monday, 13 June 2022 5:13 PM
To: Sonya Eather <seather@baileyassociates.com.au>
Subject: Re: Tetra Dartbrook ACHMP Management Plan

]

[WARNING] This email originated from outside of the organisation.

We are happy with everything thanks Sonya

From: [Nicole Davis](#)
To: ["jeff.beatty@tetraresources.com.au"](mailto:jeff.beatty@tetraresources.com.au)
Subject: Heritage NSW - ACH - Dartbrook Coal - Modification 7 - Archaeology & Cultural Heritage Management Plan (DA231-07-2000-PA-7) (Muswellbrook Shire)
Date: Sunday, 20 November 2022 8:43:00 PM
Attachments: [image001.png](#)
[image002.png](#)

Dear Jeff,

Heritage NSW has reviewed the Dartbrook Mine, Archaeology & Cultural Heritage Management Plan - for Tetra Resources, 25 October 2022, with respect to Aboriginal cultural heritage. Heritage NSW is satisfied that the Heritage Management Plan will adequately manage any ACH sites or values associated with the Modification 7. Heritage NSW has no additional comments or concerns with respect to Modification 7 proceeding. If you require any further information please contact me directly. I shall upload to the MPP this evening.

Kind Regards
Nicole Davis

Nicole Davis
Manager Assessments
Heritage NSW
Department of Planning and Environment

T 02 4927 3156 **M** 0409 394 343 **E** nicole.davis@environment.nsw.gov.au
Locked Bag 5020 Parramatta 2124



From: no-reply@majorprojects.planning.nsw.gov.au <no-reply@majorprojects.planning.nsw.gov.au>
Sent: Monday, 14 November 2022 12:26 PM
To: OEH HD Heritage Mailbox <HERITAGEMailbox@environment.nsw.gov.au>; Erin McWhirter <Erin.McWhirter@environment.nsw.gov.au>; Andre Quinon <andre.quinon@environment.nsw.gov.au>; Sirena Larsson <sirena.larsson@environment.nsw.gov.au>
Subject: Major Projects – Proponent Request for Advice - Dartbrook Coal - Archaeology & Cultural Heritage Management Plan (DA231-07-2000-PA-7) (Muswellbrook Shire)

A proponent is requesting advice in relation to a post approval matter for the Dartbrook Coal.

Please sign in to your account to view the details of this request and to upload your advice.

If you have any enquiries about this request, you can contact Jeff Beatty at jeff.beatty@tetraresources.com.au.

To sign in to your account click [here](#) or visit the [Major Projects Website](#).

Please do not reply to this email.

Kind regards

The Department of Planning and Environment



Subscribe to our [newsletter](#)

This email is intended for the addressee(s) named and may contain confidential and/or privileged information.

If you are not the intended recipient, please notify the sender and then delete it immediately.

PLEASE CONSIDER THE ENVIRONMENT BEFORE PRINTING THIS EMAIL



APPENDIX B
ABORIGINAL HERITAGE SITES
WITHIN THE DARTBROOK
MINING LEASES

Table B-1 Known Aboriginal Cultural Heritage Sites

Site No.	Site Name	Easting	Northing	Site Type	Management*
2	BELL 1	297505	6434989	Open artefact site	NI
3	BELL 2	297605	6435029	Open artefact site	NI
5	BELL 4	297955	6434959	Open artefact site	NI
7	BELL 6	296795	6435469	Open artefact site	NI
8	BELL 7	296585	6435419	Open artefact site	NI
9	BELL 8	296955	6435259	Open artefact site	NI
10	BELL 9	297405	6435439	Open artefact site	NI
11	Casey 1	295005	6435020	Open artefact site	NI
12	Casey 2	296385	6434689	Open artefact site	NI
13	Casey 3	296425	6434809	Open artefact site	NI
14	Casey 4	296211	6435166	Open artefact site	NI
15	Casey 5	295895	6435409	Open artefact site	NI
16	Casey 6	295705	6435360	Open artefact site	NI
17	Casey 7	295035	6435759	Open artefact site	NI
18	Casey 8	295345	6435739	Open artefact site	NI
19	Casey 9	295065	6435969	Open artefact site	NI
20	Casey 10	295225	6435839	Open artefact site	NI
21	Casey 11	295215	6435490	Open artefact site	NI
22	Casey 12	295475	6435349	Open artefact site	NI
23	Casey 13	295405	6435439	Open artefact site	NI
24	Casey 14	295875	6435659	Open artefact site	NI
25	Casey 15	296055	6435399	Open artefact site	NI
26	Casey 16	296185	6435210	Open artefact site	NI
27	Casey 17	296205	6435289	Open artefact site	NI
28	EVAP 1	297435	6435589	Open artefact site	NI
29	EVAP 2	297365	6435689	Open artefact site	NI
30	FAIR 1	298175	6434969	Open artefact site	NI
31	FAIR 2	297795	6435059	Open artefact site	NI
32	FAIR 3	298085	6435069	Open artefact site	NI
35	LON 2	298115	6434819	Open artefact site	NI
36	MAC 1	297055	6436899	Open artefact site	NI
37	MAC 2	296505	6436739	Open artefact site	NI
38	MAC 3	296665	6436809	Open artefact site	NI
39	MAC 4	296455	6436179	Open artefact site	NI

Site No.	Site Name	Easting	Northing	Site Type	Management*
40	MAC 5	297185	6436689	Open artefact site	NI
41	MAC 6	297125	6436179	Open artefact site	NI
42	MAC 7	297635	6436029	Open artefact site	NI
43	MAC 8	298265	6435789	Open artefact site	NI
44	MAC 9	297875	6436199	Open artefact site	Within fenced Buffer Zone
45	MAC 10	297895	6436109	Open artefact site	Within fenced Buffer Zone
50	MAC 15	297895	6436339	Open artefact site	Section 90 Permit obtained
51	MAC 16	297655	6436589	Open artefact site	Fenced and signposted
52	MAC 17	297425	6436199	Open artefact site	NI
53	TOP EVAP 1	295525	6436489	Open artefact site	NI
56	VILLAGE 2	298675	6435439	Open artefact site	NI
73	Site A	298675	6435589	Open artefact site	NI
75	Site C	298585	6435789	Open artefact site	NI
88	Dart-02	297905	6436209	Open artefact site	Within fenced Buffer Zone
89	Dart-03	297865	6436189	Open artefact site	Within fenced Buffer Zone
90	Dart-04	297305	6436189	Open artefact site	NI
91	Dart-05	297745	6436119	Open artefact site	Within fenced Buffer Zone
92	Dart-06	294365	6437489	Open artefact site	NI
93	Dart-07	294545	6437389	Open artefact site	NI
94	Dart-08	294605	6437519	Open artefact site	NI
95	Dart-09	294605	6437769	Open artefact site	NI
96	Dart-10	294705	6437869	Open artefact site	NI
97	Dart-11	294605	6437869	Open artefact site	NI
98	Dart-12	294555	6437839	Open artefact site	NI
99	Dart-13	294465	6437669	Open artefact site	NI
100	Dart-14	296305	6437149	Open artefact site	NI
101	Dart-15	297965	6436239	Open artefact site	Within fenced Buffer Zone
102	DE 1	294255	6434371	Open artefact site	NI
103	DE 10	296253	6438690	Open artefact site	NI

Site No.	Site Name	Easting	Northing	Site Type	Management*
104	DE 11	296117	6438039	Open artefact site	NI
105	DE 12	294021	6436770	Open artefact site	NI
106	DE 2	293831	6434354	Open artefact site	NI
107	DE 3	293896	6435904	Open artefact site	NI
108	DE 4	294005	6436166	Open artefact site	NI
109	DE 5	294160	6434824	Open artefact site	NI
110	DE 6	293761	6436948	Open artefact site	NI
111	DE 7	293762	6436955	Open artefact site	NI
112	DE 8	294253	6438469	Open artefact site	NI
113	DE 9	295458	6439658	Open artefact site	NI
118	MP5	293955	6433360	Open artefact site	NI
119	MP6	293975	6433459	Open artefact site	NI
120	MP7	294055	6433639	Open artefact site	NI
123	MP11	294845	6434189	Open artefact site	NI
124	MP11	294645	6434120	Open artefact site	NI
126	MP13	294836	6434339	Open artefact site	NI
127	MP14	294734	6433449	Open artefact site	NI
128	MP15	294655	6434739	Open artefact site	NI
129	MP16	294535	6434760	Open artefact site	NI
130	MP17	294845	6434700	Open artefact site	NI
131	MP18	294865	6434989	Open artefact site	NI
132	MP19	295066	6434990	Open artefact site	NI
133	MP20	295175	6434920	Open artefact site	NI
134	MP21	295255	6435139	Open artefact site	NI
135	MP22	295155	6435119	Open artefact site	NI
136	MP23	295475	6434599	Open artefact site	NI
137	MP24	295565	6434699	Open artefact site	NI
138	Bradshaw 01	294891	6437964	Open artefact site	NI
139	Kayuga (1996) ISF 13/2; K(1996) ISF 13/2	296955	6435069	Open artefact site	NI
140	Kayuga (1996) ISF 13/1; K(1996) ISF 13/1	296605	6434939	Open artefact site	NI
141	Kayuga (1996)	297105	6434689	Open artefact site	NI

Site No.	Site Name	Easting	Northing	Site Type	Management*
	13/1;K(1996) 13/1				
142	D2	298364	6436303	Open artefact site	Fenced and Signposted
143	D3	298157	6436333	Open artefact site	Section 90 Permit obtained
144	D4	298205	6436289	Open artefact site	Section 90 Permit obtained
145	MacIntyres Dairy 2	298385	6436249	Open artefact site	Section 90 Permit obtained
146	MACINTYRES DAIRY 3 (MD3)	298405	6436309	Open artefact site	Fenced and Signposted
147	MacIntyres Dairy 4	298245	6436559	Open artefact site	NI
148	MACINTYRES DAIRY 5 (MD5)	298255	6436429	Open artefact site	NI
149	MD5 Locus B	298232	6436468	Open artefact site	NI
150	MacIntyres Dairy 2B	298335	6436479	Open artefact site	NI
150	MD2 LocusB	298343	6436480	Open artefact site	Fenced and Signposted
151	Kay2	279874	6436315	Open artefact site	NI
152	Kay3	298169	6436530	Open artefact site	NI
153	Kay4	297912	6436319	Open artefact site	Section 90 Permit obtained
154	Kay1	297730	6436587	Open artefact site	Section 90 Permit obtained
158	Sandy Creek/ Woodburn	293604	6437164	Open artefact site	NI
159	Dartbrook Sandy Creek	295788	6439535	Open artefact site	NI
160	Dartbrook/ Woodlands	295463	6439886	Open artefact site	NI
161	Kayuga	298313	6436563	Open artefact site	NI
162	Dartbrook Sandy Creek	297429	6439840	Scarred tree	NI
163	Dartbrook 3	295600	6439806	Open artefact site	NI
164	Brouns Mountain 1	301505	6436089	Open artefact site	NI

Site No.	Site Name	Easting	Northing	Site Type	Management*
165	Brouns Mountain 2 3 4	301605	6436089	Open artefact site	NI
167	Brouns Mountain 6 7	301505	6436589	Open artefact site	NI
168	Brouns Mountain 8	301705	6436689	Open artefact site	NI
169	Aberdeen 1	299265	6435779	Open artefact site	NI
170	Travelling Stock Route-Kayuga; TSR-Kayuga	298305	6434939	Open artefact site	NI
171	MTP-1207	296236	6434604	Open artefact site	NI
172	MTP-1208	296248	6434605	Open artefact site	NI
173	MTP-1209	296328	6434639	Open artefact site	NI
174	MTP-1210	296383	6434619	Open artefact site	To be salvaged by MACH Energy
175	MTP-1213	294055	6433706	Open artefact site	NI
176	MTP-1214	294059	6433734	Open artefact site	NI
177	MTP-1215	294056	6433762	Open artefact site	To be salvaged by MACH Energy
178	MTP-1216	294052	6433774	Open artefact site	To be salvaged by MACH Energy
179	MTP-1217	294050	6433790	Open artefact site	To be salvaged by MACH Energy
180	MTP-1218	294037	6433845	Open artefact site	To be salvaged by MACH Energy
181	MTP-1219	294034	6433859	Open artefact site	To be salvaged by MACH Energy
182	MTP-1220	294030	6433871	Open artefact site	To be salvaged by MACH Energy
183	MTP-1221	294026	6433887	Open artefact site	To be salvaged by MACH Energy
184	MTP-1222	294025	6433894	Open artefact site	To be salvaged by MACH Energy
185	MTP-1223	294025	6433903	Open artefact site	To be salvaged by MACH Energy
186	MTP-1224	294146	6433793	Open artefact site	NI
187	MTP-1243	294614	6433514	Open artefact site	NI
188	MTP-1255	294738	6433896	Open artefact site	To be salvaged by MACH Energy

Site No.	Site Name	Easting	Northing	Site Type	Management*
189	MTP-1256	294811	6434208	Open artefact site	NI
190	MTP-1257	294906	6434153	Open artefact site	NI
191	MTP-1258	294642	6433706	Open artefact site	To be salvaged by MACH Energy.
192	MTP-1259	294656	6433938	Open artefact site	To be salvaged by MACH Energy.
193	MTP-1260	294704	6434214	Open artefact site	NI
194	MTP-1261	294612	6434142	Open artefact site	NI
195	DB-AS1-11	297592	6435505	Open artefact site	NI
196	DM-AS1-11	296470	6437504	Open artefact site	NI
197	BCA-070	293802	6433983	Open artefact site	NI
198	BCA-071	293946	6433848	Scarred tree	NI
199	BCA-072	293475	6433813	Scarred tree	NI
200	BCA-073	293756	6433570	Open artefact site	NI
201	BCA-074	293181	6433661	Open artefact site	NI
202	BCA-075	293416	6433434	Open artefact site	NI
203	BCA-076	293720	6433329	Open artefact site	NI
204	BCA-077	293508	6433368	Scarred tree	NI
205	BCA-078	293487	6433331	Scarred tree	NI
206	BCA-079	292770	6433564	Open artefact site	NI
207	BCA-094	292973	6433740	Open artefact site	NI
208	BCA-096	292888	6434068	Open artefact site	NI

* NI – Site will not be impacted and will remain in the landscape. No active management measures required.